

# Copyright notice

The copyright for this presentation remains with HS2 Ltd.

It cannot be reproduced as a whole or in part without written permission from HS2 Ltd.

If required, please contact our Corporate Communications Team at [corporatecomms@hs2.org.uk](mailto:corporatecomms@hs2.org.uk).



# HS2

## **Solihull HS2 Implementation Advisory Group**

**Thursday 21 March 2019**

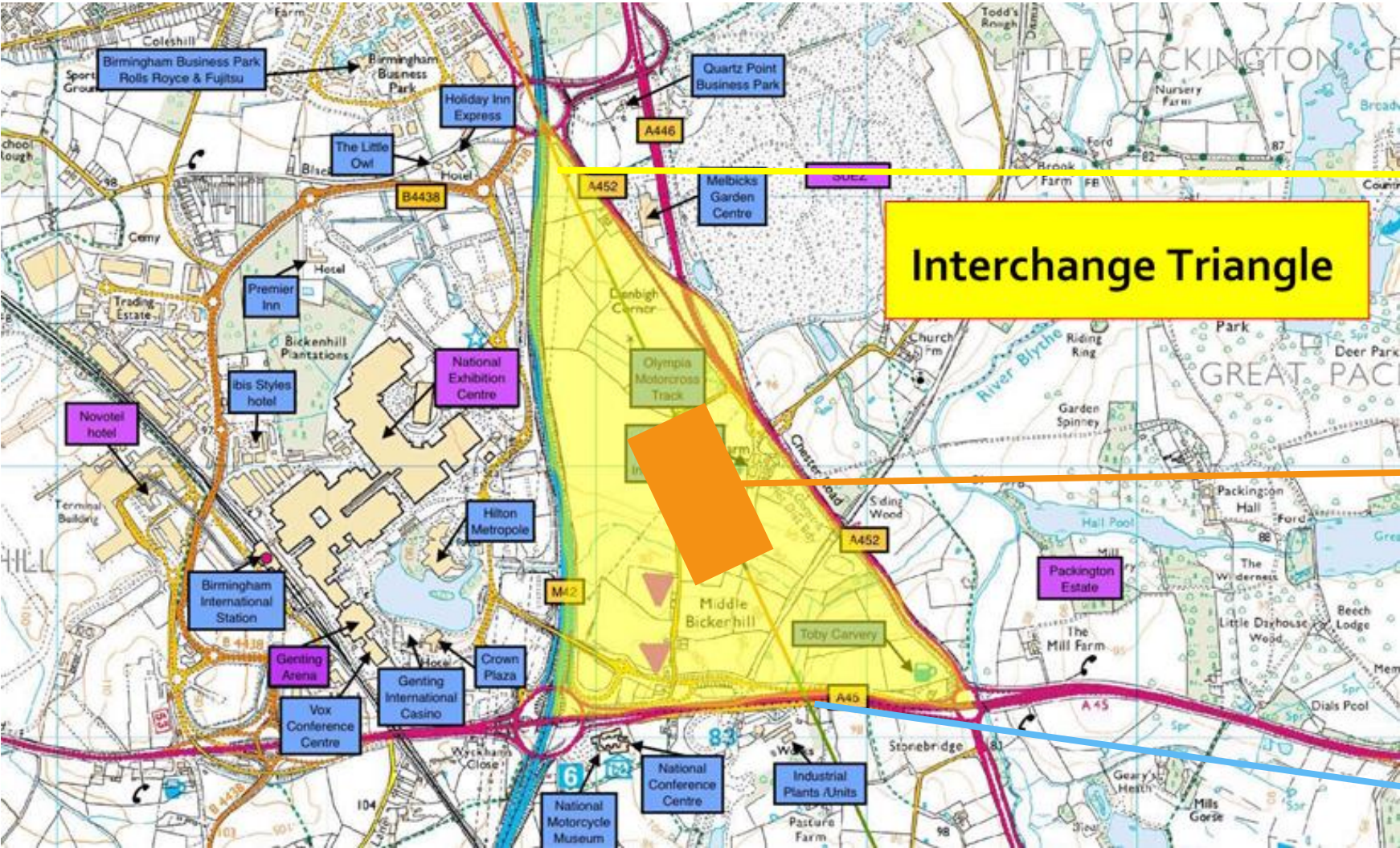
LM comprises two of Europe's most successful and innovative construction and infrastructure organisations, combining international best-practice.



Both of the LM JV parent organisations have market-leading strengths that are complementary to each other and to the HS2 scheme.



# Interchange Triangle



Land now "owned" by HS2  
under schedule 16 possession

Indicative location of  
Interchange Station and  
related facilities (exact size  
and location tbc)

HS2 route

# Works in Solihull ongoing since end of 2018

## Ongoing utility surveys and bore hole monitoring

- Surveys currently ongoing, and February to May 2019 (monitoring), overnight lane closures on sections of roads around the interchange area, 8pm to 6am

## Ongoing security programme and land possession

- HS2 took formal possession of land within the triangle boarded by the A452, A45 and M42 in November 2018
- To prevent any unauthorised access onto the site, we are undertaking an ongoing programme of securing and maintaining field accesses in the area using a mixture of concrete blocks, fencing and hoarding

## Permanent closure of top section of Middle Bickenhill Lane

- Permanent closure of the top section of Middle Bickenhill Lane from the north of the last residential property up to the junction with Packington Lane and the A452
- Access to the unaffected section of Middle Bickenhill Lane has been maintained at the southern end via East Way

## Ongoing archaeological works

- From week commencing Monday 21 January, until summer 2019, conducting archaeological digs on HS2 owned land
- Do not disrupt highways, traffic movement or building access in the area

## Ongoing vegetation clearance

- From April, for approximately two weeks, hand felling and tidy up sites across the area during daytime and nighttime off-peak hours. Single lane closures to aid by regulation. No further fresh clearance.



# Upcoming highways scheme

Our highways scheme is broken into 3 programmes:

- **Early works** – Begin early April 2019
- **Structures** (M42 / A446 / HS2 Trace Bridges) – Begin June 2019
- **Highways realignment (Area “A”)** – Begin August/September 2019

Our highways scheme, **early works programme**, has been approved and will commence early April.

Specific details, including traffic management (TM) dates and locations, will be agreed with the relevant local authorities as works progress and will be shared with communities prior to works commencing.

Our structures and highways realignment programmes will be approved by May and this may alter their start dates.

\*All dates have the potential to change depending on site and weather conditions; all timeline/work changes will be communicated



# Scope of early works programme



Working on  
behalf of

**HS2**

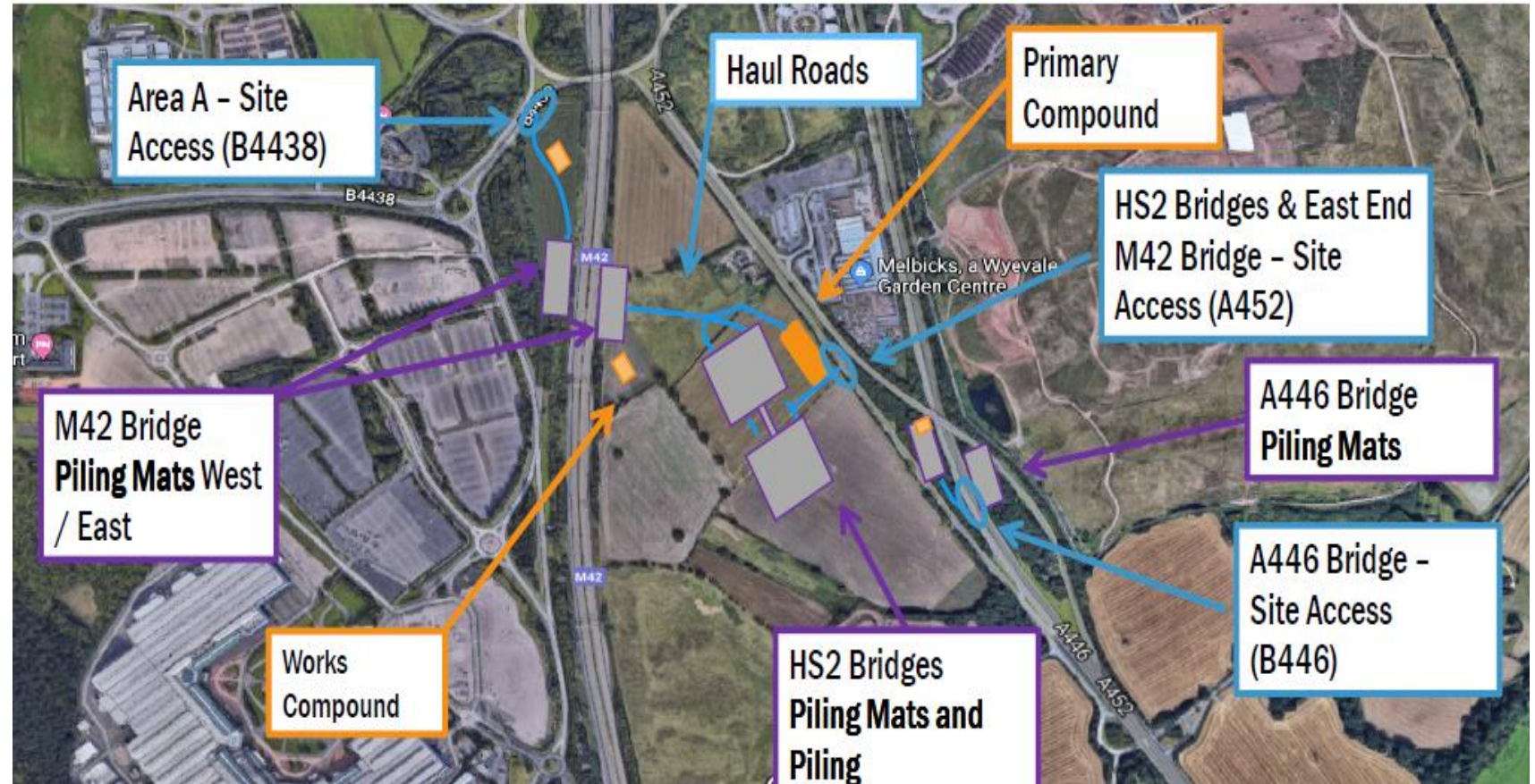
- Junction access, internal haul Roads and compounds construction
- Vegetation clearance and topsoil Strip
- Tree stump excavation to pile caps and structures locations
- Temporary works around the WPD pylon base M42 West abutment
- Temporary works to A446 highway embankment
- M42 West and East Abutment Piling Mats
- HS2 Trace overbridge North & South Piling Mats and Foundation Piling
- A446 West and East Abutment Piling Mats
- Compound establishment for the Works Package and WP61
- Procurement of steel for 2 x Bridges (M42 / A446)
- DfMA Shell Abutment mould procurement
- Traffic Management required to facilitate the works





# Overview of early works programme

- Four new access junctions, to connect to haul roads, will be built concurrently on the A452, B4438 and A446 (N/B & S/B) from 8 April until June 2019. This will take our contractor traffic off the live network and reduce the requirement for TM in the future. Temporary daytime, off-peak, lane closures will be in operation.
- Constructing piling mats will take place off the live network for 4-5 months, late May (grey shapes).
- Haul roads and compounds will be created off the live network on HS2 owned land, April onwards orange and blue shapes).



\*exact location of compounds may alter depending on site conditions



Image of piling mats and compound in the Interchange Triangle, over the HS2 trace, in preparation for the construction of 2 future overbridges in the Triangle, as part of the structures programme



Image of A452 compound and access tie in off live network

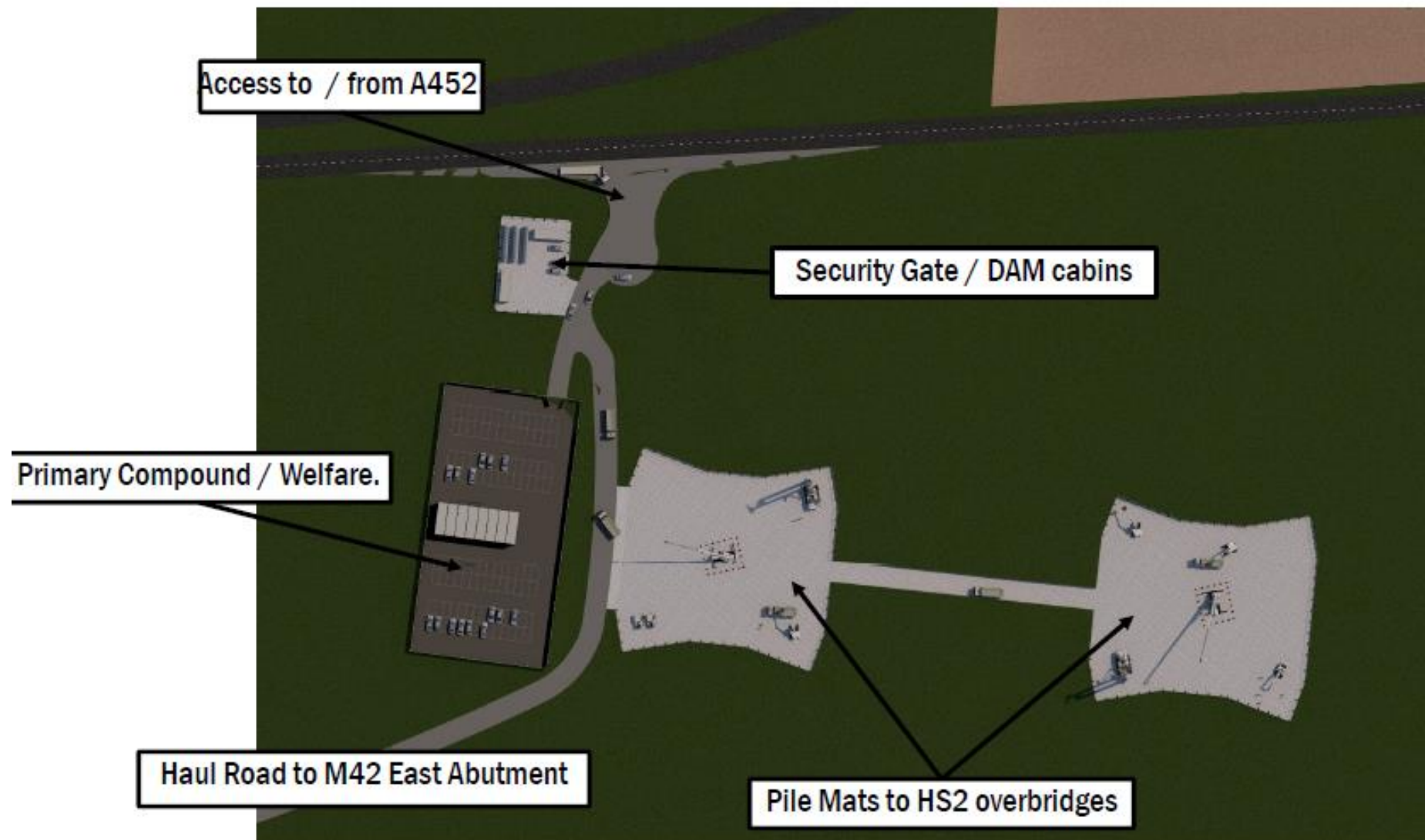
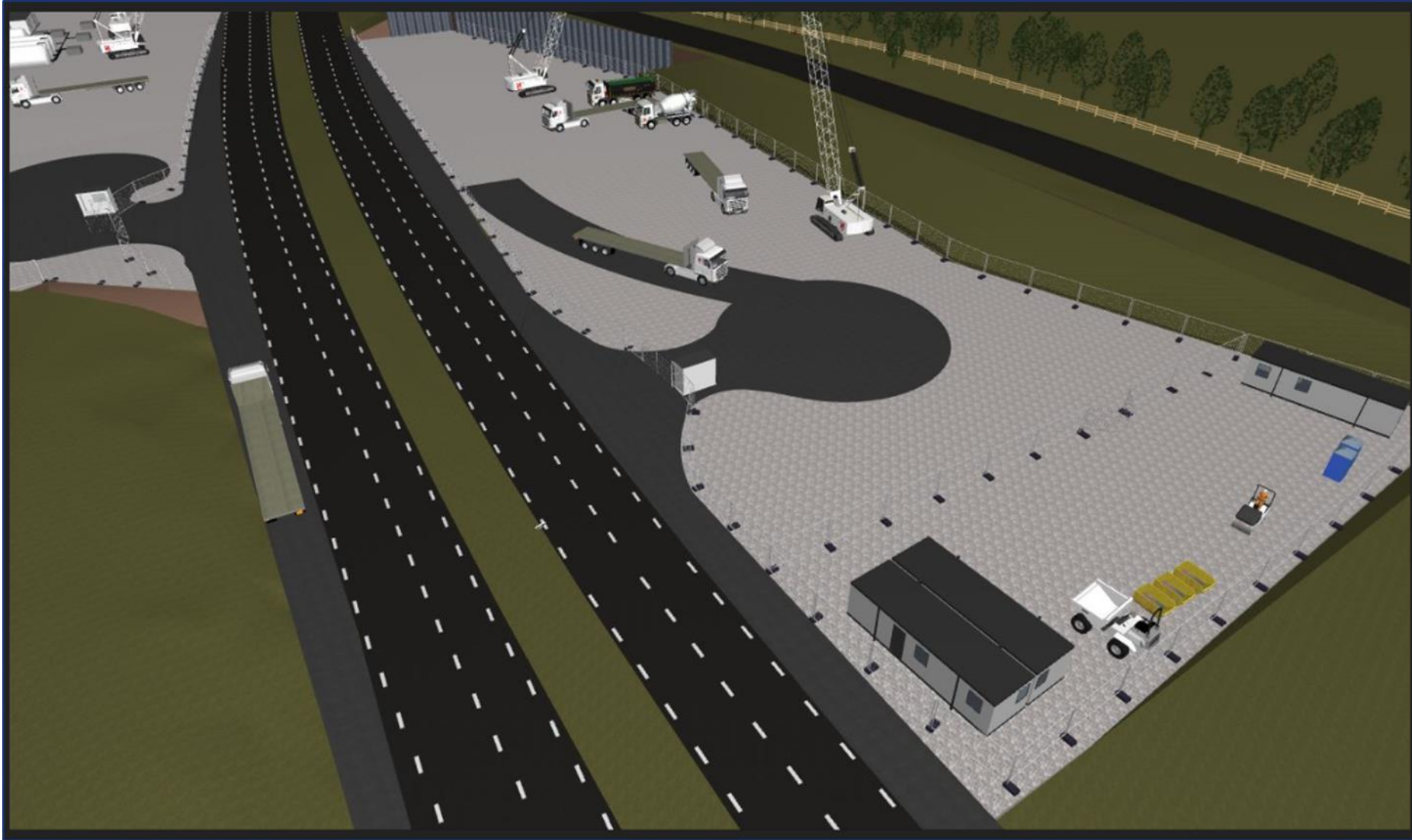




Image of piling mats at the M42, in preparation for the construction of the future overbridge, as part of the structures programme



Image of A446 compound and access tie in off live network





# Future highways scheme programmes

The future highways schemes programmes, **structures** and **highways realignment**, will be approved by May, and confirmed works information will then be available. Although some works in the structures programme will merge with the early works programme.

In the meantime, the information we can share on these programmes, is outlined in the final slides:

- **Structures** (M42 / A446 / HS2 Trace Bridges) – Begin June 2019
- **Highways realignment (Area “A”)** – Begin August/September 2019



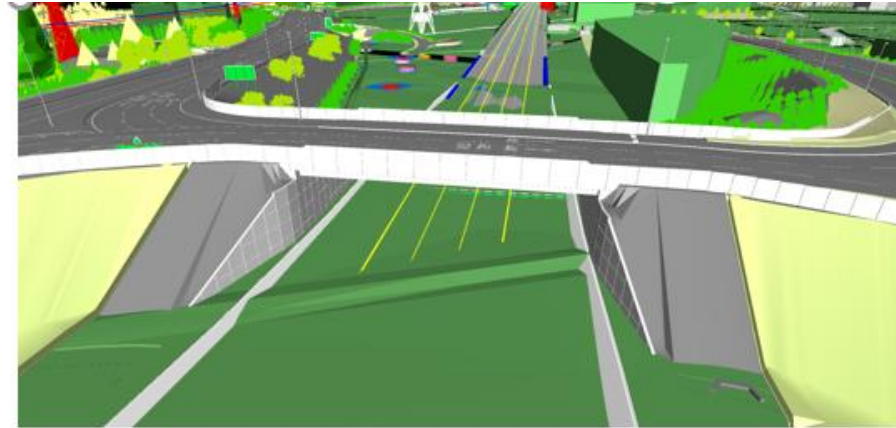
## Structures

Begin June 2019 – up to 12 months works of work in total

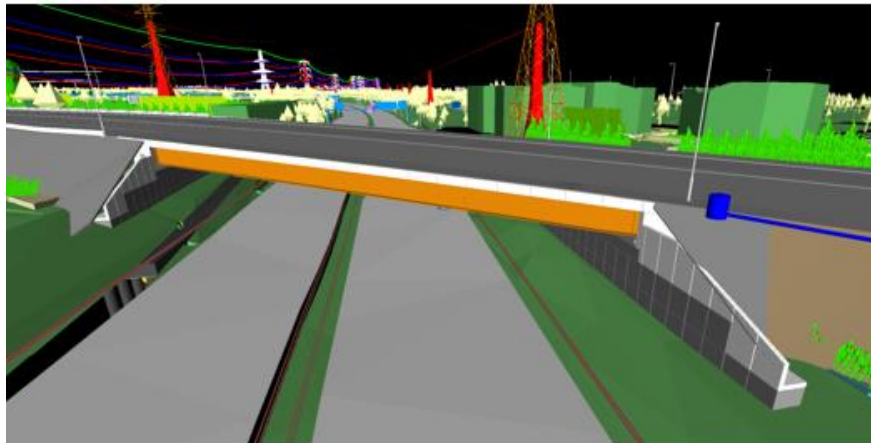
- Constructing 2 overbridges along the HS2 railway trace in the Interchange triangle
- Constructing an overbridge on the A446 and over the M42 (early 2020)



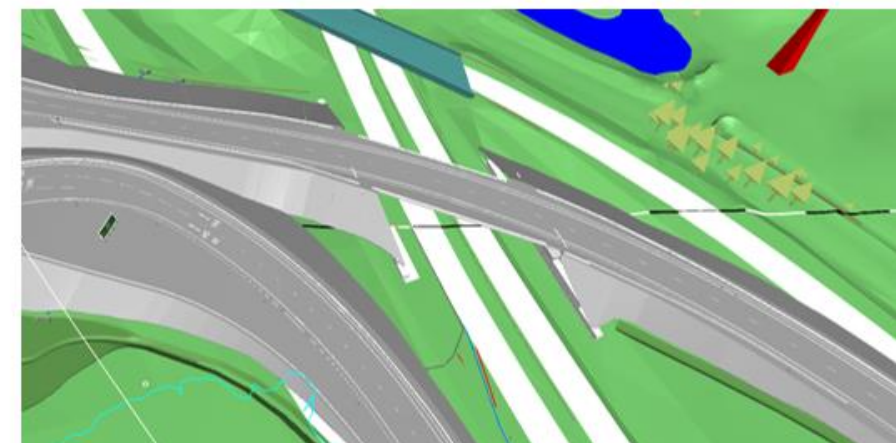
**A452 over HS2 South Bridge**



**A452 over HS2 North Bridge**



**A452 over M42 Bridge**



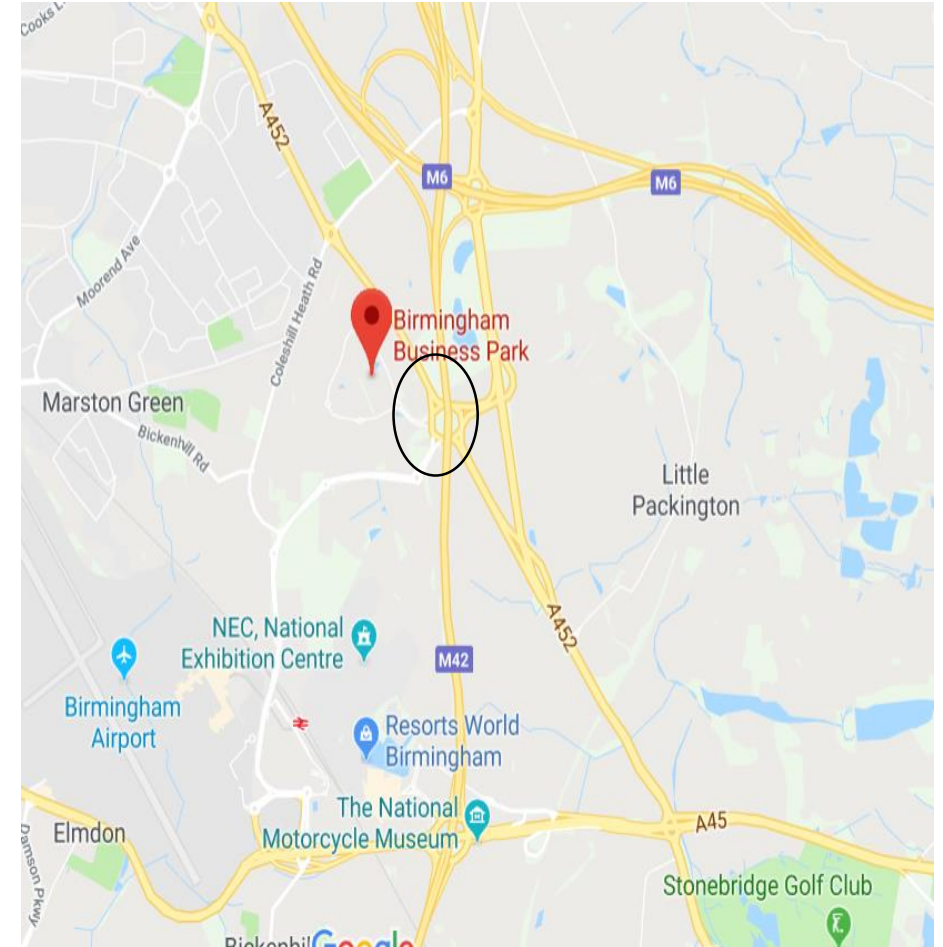
**A452 over A446 Bridge**



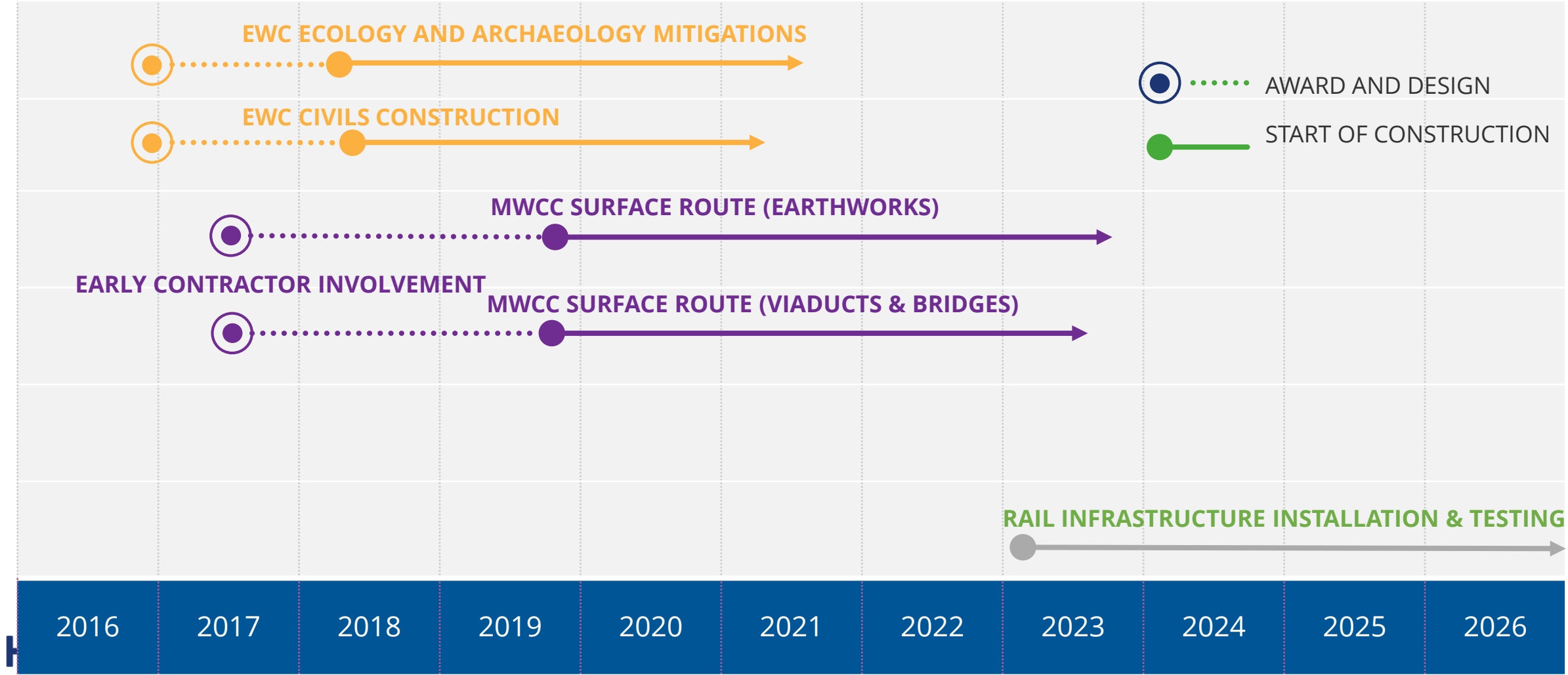
## Highways realignment

Begin August/September 2019 - up to 18-20 months works of work in total

- Creating a new highways network off and around the island leading onto Birmingham Business Park whilst the existing network remains live throughout

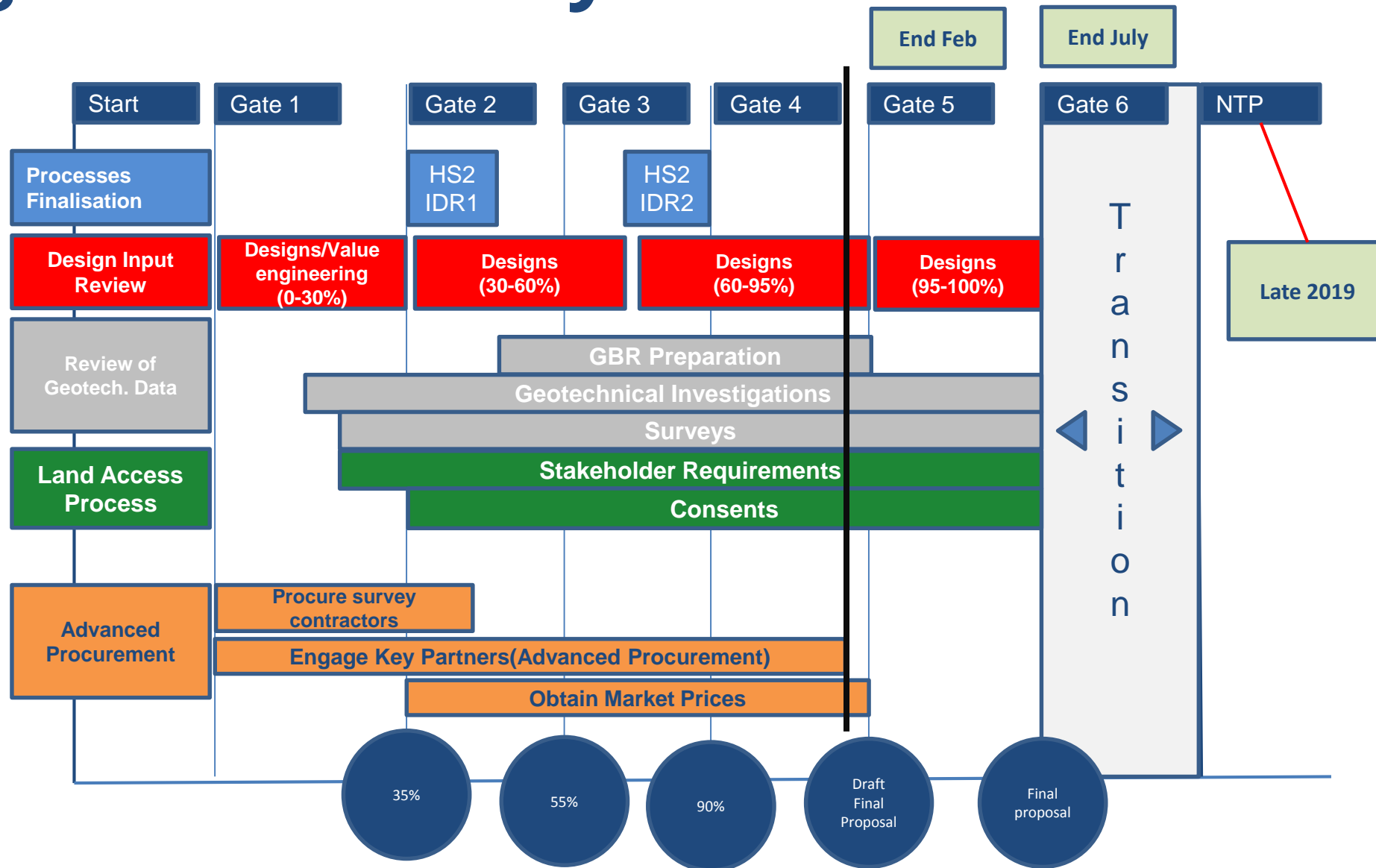


# High Level Programme of Works





# Stage One Gateway Process



# Continuous Haul Route in Berkswell

The most effective way of establishing a continuous haul route in Berkswell is to concentrate on the construction of the WCML crossing as early as our Balfour Beatty Vinci's programme as possible.

To help achieve this Balfour Beatty Vinci are also working toward a planning application later this year to enable the use of Hallmeadow Road and a dedicated haul route from Road.

Updates about this have been provided to:

- Balsall Common PC
- Berkswell PC
- Local residents

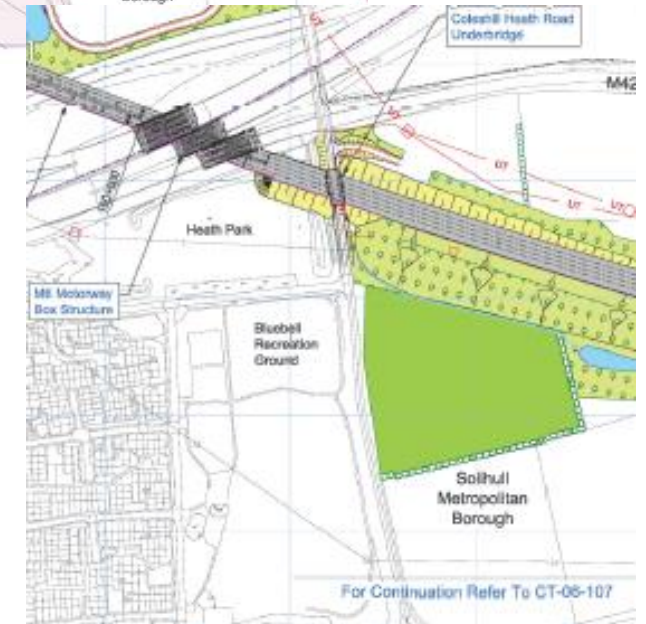
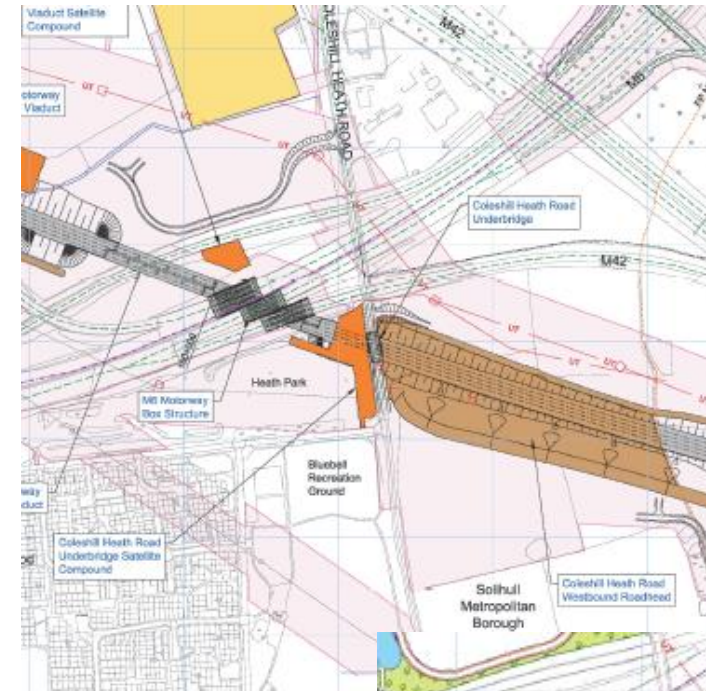


# Heath Park

Options for retaining pitches have been discussed options with officers:

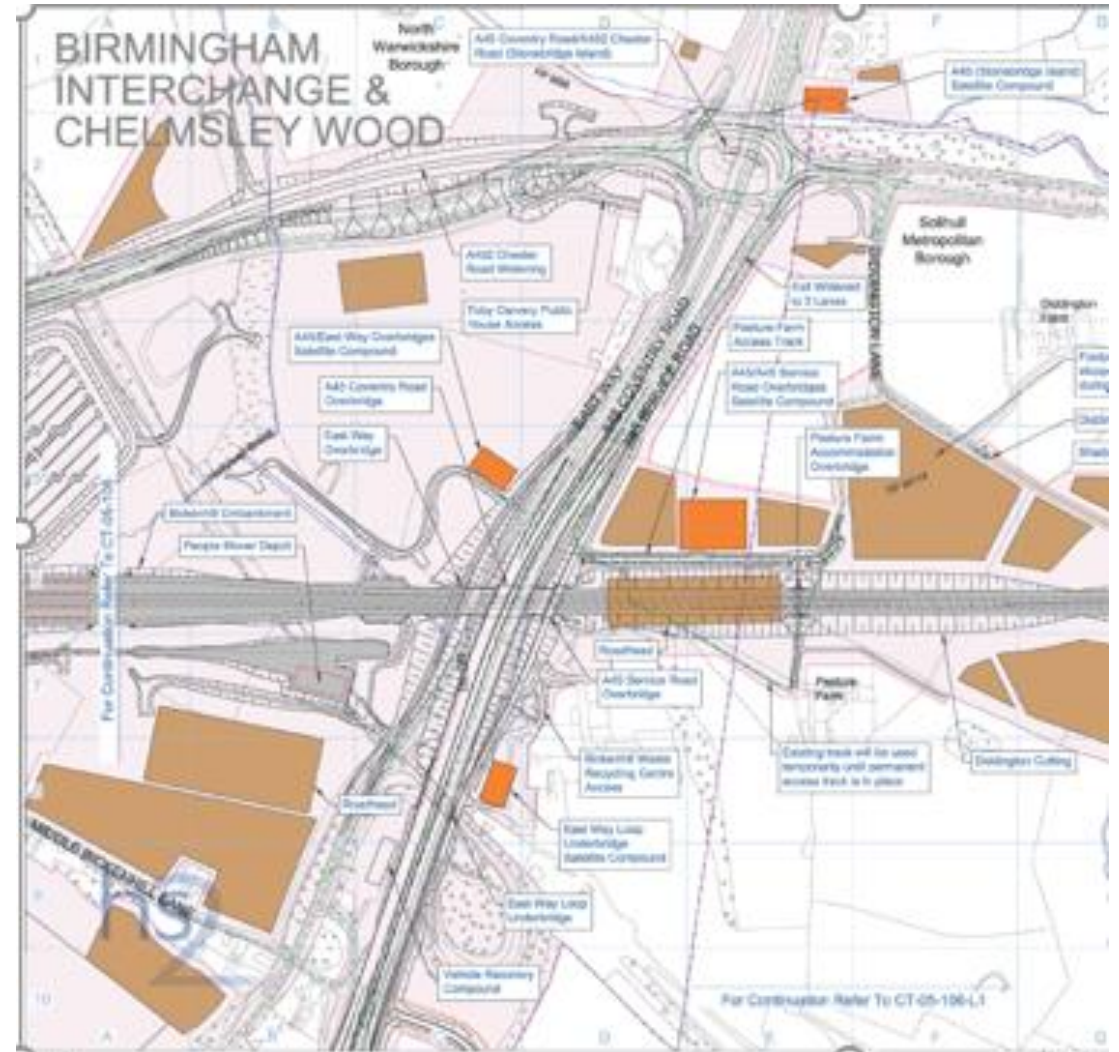
- During construction
- Post construction

Further meeting being arranged with key stakeholders to explore options for a community led project in the area.



# A45 and Bickenhill Recycling Centre

Finalising the impact of HS2 works on the A45 is still being work on. It is expected that the decision will take place shortly.





# Upcoming meetings and events

## Public drop-ins

- Monday 25<sup>th</sup> March, 3pm to 5pm: Resortsworld, Solihull
- Tuesday 19<sup>th</sup> March, 2pm to 4pm: Balsall Common Library, Balsall Common
- Monday 8<sup>th</sup> April, 3pm to 5pm: Fentham Hall, Hampton-in-Arden
- Sunday 28<sup>th</sup> April (times TBC): Chelmsley Wood Shopping Centre
- Tuesday 7<sup>th</sup> May, 4pm to 7pm: Marston Green Parish Hall

## Other meetings

- Monday 25<sup>th</sup> March: Meriden Parish Council meeting
  - Thursday 28<sup>th</sup> March: Marston Green Parish Council meeting
  - Wednesday 10<sup>th</sup> April: West Midlands Police briefing (Birmingham Business Park)
-

# Communicating our works

Our works will take place on and off the highways network on and surrounding the A452, A45 and M42 triangle

Throughout the schemes, traffic management will be installed at various times and locations

Throughout 2019 and 2020, we will communicate our works and traffic management information via:

- Works information advertised on Commonplace and issued to stakeholders and subscribers
- HS2 24/7 Freephone and email Community Helpline
- Regular works programme presentations at community and business forums
- Programme of public drop-in events across the Interchange area



# Questions?

Helpdesk (24 hours): 08081 434 434

Email: [hs2enquiries@hs2.org.uk](mailto:hs2enquiries@hs2.org.uk)

Website: [www.gov.uk/hs2](http://www.gov.uk/hs2)

High Speed Two (HS2) Limited, Two Snowhill, Queensway, Birmingham B4 6GA



# Copyright notice

The copyright for this presentation remains with HS2 Ltd.

It cannot be reproduced as a whole or in part without written permission from HS2 Ltd.

If required, please contact our Corporate Communications Team at [corporatecomms@hs2.org.uk](mailto:corporatecomms@hs2.org.uk).

