

CATNEY NEWS

2020

NOVEMBER



CONTACTS

Frances Cook, Secretary to the Residents Association.

secretary@catney.co.uk 0776 8502039

Catney News: Please send all articles to Christine Cluley, on cluleychris8@outlook.com or ring 01675 442728 All articles need to be with Chris by the 20th of the month.

Village Hall bookings: Gareth Thomas on 07796268012 or

gareth10637@hotmail.co.uk

Twitter account: @CatneyResAssoc

Website of Residents Association: www.catney.co.uk



NEWS FROM YOUR RESIDENTS ASSOCIATION

Planning

2015/51409 Motorway Service Area (MSA) at new Jct5aM42 - Catherine de Barnes/Hampton

A decision on this has been further delayed by up to 3 months following a holding notice submitted to SMBC by Highways England. Your councillors have been in discussions with Saqib Bhatti MP to ask him request the Secretary of State to “call in” the application, which would result in a Public Enquiry being held into both this and the application for an MSA at Jct. 4

2020/01821- 351 Lugtrout Lane -outline planning for 2 self-build homes

This application was refused on the 7th October on the grounds of inappropriate development in the Green Belt

2020/ 01908/PPFL -PL/2020/01908/PPFL | Erect detached infill dwelling. | Land Adjacent 339 Lugtrout Lane

At the time of writing this application had not been decided

This application is still pending a decision.

2020/02077- Major Refurbishment of the Boat Inn – Catherine de Barnes

Representatives of the Parish Council along with Catherine de Barnes Residents Association have been in regular dialogue with representatives of Greene King regarding implications of the refurbishment for local residents. Those discussions have gone well and the Residents Association support the application. A copy of our response can be viewed on our website

Solihull Draft Local Plan Review October 2020

On 6th October Full Council agreed Cabinet’s recommendation to accept the Draft Local Plan for consultation and subsequent submission to the Planning Inspectorate for examination. The plan covers the period 2021/2036. The consultation will commence at the end of October for a period of 6 weeks. The Plan has significant implications for the Parish as a whole, in particular for Catherine de Barnes Ward where 2 sites have been allocated to take nearly **800** houses. The Local Plan can be viewed by visiting solihull.gov.uk/lpr at the end of the month.

Details of the sites can be viewed on the 2 Village Notice Boards from the first week in November . If you are unable to view them on the internet and would like copies of the relevant document please phone/text 07824 696137 with your name and address and we will arrange to get hard copies to you.

Regarding site **HA2 Oak Farm**. Some of you may recall that some time ago we asked for views as to whether you preferred a care village or 80 dwellings as it was then, to be built on the site. The overwhelming response was for the care village and hence our response is based on those conclusions. By the way it is now allocated to take 95 homes.

We are *objecting* to site SO1 adjacent to Grand Union Canal/Damson Parkway in its entirety.

IMPORTANT : (At the time of printing this site was due to be positioned within the Solihull section of the document. It is within the our Parish and is allocated to take **700 of the 800** houses and they could commence building within 2 years – The Parish Council has made representations to the plan authors to move the site to the Hampton In Arden section of the Plan but no decision up to now has been received).

Responses need to be sent to, Solihull Council
Council House
Manor Square
Solihull
West Midlands
B91 3QB

For the attention of Mr Gary Palmer Group Manager Policy & Engagement **by 4th December**

We **urge** residents to consider the plan and its implications for us, have your say **NOW! THIS IS YOUR LAST OPPORTUNITY**. As a guide to aid you to compile a response our website www.catney.co.uk has details of points which could be included in a response from **6th November**

These will be forwarded to the Planning Inspector who will conduct a Public Examination of the Plan probably around the middle of next year at which the details of the Plan can be challenged both by residents and developers.

Neighbourhood Plan (NP) Review

Although we are still receiving a few surveys back, the first part of the NP review process is complete with **340** surveys having been returned. The next stage is for the individual responses to be recorded on spreadsheets and then analysed. Based on the results the NP working group will start to formulate the revised plan. The current Covid-19 situation has made things quite difficult and slowed the process somewhat. In the meantime, the Government has launched a consultation on proposals to radically change not only the planning process but how Local Plans and future Neighbourhood plans should be constructed. Members of the working group are reviewing these proposals to identify the implications for our review.

Village Hall

The Village Hall continues to be open to existing classes although the number of classes being held is well down on last year as you would expect. Full Covid-19 regulations are in place and things seem to be running well.

Remembrance Sunday

Unfortunately, we will not be holding a service in the Hall this year for obvious reasons. However, Hampton Church will and it will be available to view on Zoom. Residents should visit their website for details nearer the time. The address is www.hamptoninardenchurch.org.uk

SERVICES AT ST. MARY AND ST. BARTHOLOMEW CHURCH, HAMPTON IN ARDEN

Hampton in Arden, Bickenhill and Barston churches are now holding services once again. Hampton services are at 8.15 am, 11 am and 7.30 pm (Compline not Evensong) on a Sunday and 10 am on a Thursday.

Facemasks must be worn and there must be social distancing. You will be guided to a seat. There is no singing. Please take a look at the church website

www.hamptoninardenchurch.org.uk where there are details of services, links to live streamed services on Zoom, and any service sheets needed.

For All Souls on Sunday the 1st November there will be a “Wayside Shrine” in the afternoon in the Lychgate from 3 pm until 7 pm. Here you can add your departed loved ones names to the prayer tree and light a candle for them. On Monday 2nd November at 7.30 pm there will be a live streamed service in church on Zoom, when all names of those whose funeral has been held in Hampton church over the last three years and the names of those added to the prayer tree will be read out. Please note this service is just for clergy but can be accessed at home via Zoom. Zoom links can be found nearer the date on the church website. See above.

Remembrance Service

There will be no Parade through Hampton in Arden this year. We have also been advised by Solihull Council that we cannot have the short open air service that we intended to have in the Sports Field. At 10.30 am on Sunday 8th November especially invited dignitaries and representatives from the local organisations will attend a service in church and again this will be live streamed on Zoom for anyone wishing to access it. Please look on the church website for the Zoom link. We ask that anyone who can, takes a small wooden cross with a poppy on it (available for £2.99 from The Royal British Legion Poppy shop website) and places it in the grass behind Hampton war memorial in the lead up to Remembrance Sunday. Please don't gather in groups and please maintain social distancing when taking your cross.

.....

Christmas

Hampton Church cannot hold the usually well attended Crib Service in church and some of our normal Christmas services will be different or not held. Instead, we are asking that everyone in Hampton and Catney who is able to do so, build an angel in their front gardens or display an angel in their windows. These can be lit up if possible. No fairies please!

The angels will signify Hope and Courage for the future. In the Bible, angels say "Do not be afraid" and this message is so necessary for the current time.

Let us welcome everyone who lives in or comes through our villages with a message of hope and encouragement at Christmas time. Please display your angel from the 1st of December through Christmas itself. If you can let Chris Cluley know if you have an angel before the 25th November and she can add your address to a list for anyone wishing to walk around and view the angels. chris.cluley1@gmail.com or phone her on 01675 442769 or the normal contact numbers in this edition of the News. She will leave the lists in local shops.

Thank you!

Sylvia Walters has asked me say a big thank you to whoever put a photo through her door of the bakery that used to be in Catney.

.....



What is Advent?

Advent is the new year of the Christian Church and the church season that leads to Christmas Day.

Advent is the time when Christians remember that Jesus came into the world in Palestine 2000 years ago and that Jesus also promised one day to return in all His glory.

Clergy typically wear royal purple or royal blue vestments during Advent.

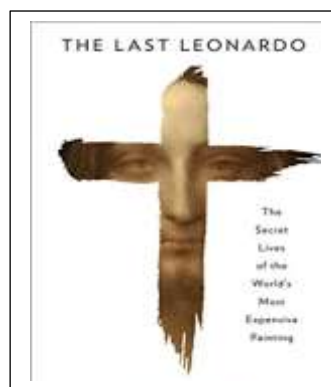
The first day of Advent this year is 29th November and finishes on 24th December

BOOK REVIEW

THE LAST LEONARDO

A quest for the truth by Ben Lewis

A Book Review by John Alderson



For anyone with even a remote interest in art this is a fascinating story. It has to be called a story because Ben Lewis has put together, in what is a very well researched book on the authenticity of the Salvator Mundi being painted by Leonardo da Vinci, there are clear areas of uncertainty.

This book sits perhaps more correctly in the historical thriller category. There is money, lots of it, there is fraud, secrecy, obfuscation, lies, arrogance and ignorance all to be found in this story. But you will also find dogged determination, highly skilled artwork and restoration and a high degree of self belief by two minor art world figures, when faced by critics with a very high opinion of their own self importance.

Robert Simon began working as an art dealer in 1986 and built up a modestly successful business. In 2005 Alex Parish, a similar small dealer and appraiser, spotted a picture for sale in a catalogue prepared by an obscure auction house in New Orleans. Simon had also spotted it and they decided to collaborate, as they had done in the past, and jointly purchase the painting for \$1,175.00.

In November 2017 Christie's sold the same painting for \$450 million.

This is the story of that painting from its start in Italy in the sixteenth century at the studio of Leonardo da Vinci to its ultimate sale to Mohammed bin Salman in 2017.

The art world, and particularly the world of so called "high art" is a singularly daunting place and doesn't come out too well in the honesty stakes, but it does - occasionally - make works like the Salvatore Mundi available for the public to see and enjoy.

I was lucky, I saw the Salvator Mundi when it was included (not quite correctly) in the Leonardo Exhibition at the National Gallery held in 2011-2012. I remember it well; I will never forget it.

For Sale : Stihl Electric Leaf Blower/Garden Vac Model SHE 71.

Twelve months old. Only used a few times as a blower - vacuum attachment never been used so as brand new. Over £100 new - accept £50.

Geoff Lord - Tel: 07407 811 007

Catney Christmas Craft Fair 2020

It will come as no surprise to the villagers of Catherine de Barnes that given the current Covid 19 circumstances we have decided to cancel this year's fair. Large crowds meeting together in confined spaces is a risk to all of us and clearly against current rules.

The date for next year's fair is Saturday 27th November, open from 11am till 3pm. More information in the Autumn next year.

If there any newcomers to the village who produce handmade articles and craft work who would like a table to exhibit and sell their work next year, please contact me at liz@boxall.info so that I can put you on a mailing list.

Liz Boxall

Lesley and Dave Cuthbert

John Evans

Catney Christmas Craft Fair Organisers

In the meantime, for those of you who were patrons of our craft club table and have bought jam in previous years, I have made a small amount of homemade blackberry and Damson jam from locally collected fruit and grape and rosemary jelly made from locally grown grapes. Pots are £1.50 or £1.00 depending on size of pot, with funds going towards our fund raising for next year. Contact me at the above email, phone 0121 705 7531 or text mobile 07973 073416

Liz Boxall





My daughter Jenny is walking a mile a day for 24 days in November in aid of pancreatic cancer awareness to try and raise money for much needed research and swifter diagnosis. Her dad, my husband, Ken Cluley, who was treasurer of Catney Residents Association for many years, died of this horrible disease in September last year as it simply was not diagnosed in time to enable an operation.

At the present time, it is rare for sufferers to live longer than 3 months after late diagnosis. Ken managed to struggle on for nearly a year. It was terrible to watch him deteriorate despite chemotherapy, to see his reliance on more and more morphine, eventually unable to eat and losing more than six stones in weight.

It can attack men and women, of all ages. Pancreatic cancer is the UK's 5th cause of cancer death. With barely any improvements to pancreatic cancer survival rates in the last 50 years, it is clear that there can be no progress without change and we need your help.

- **Over 9,000 people die of the disease annually across the UK, often within weeks of diagnosis.**
- **5-year survival is under 8% and UK survival lags behind other high-income countries.**
- **Public awareness levels across the UK are low: 52% of people know 'almost nothing' about the disease and 76% can't name a single symptom.**

While these stats paint a bleak picture of the disease, with early diagnosis, pancreatic cancer can be survived.

For those diagnosed in time for potentially lifesaving surgery, the 5-year survival increases to around 30%. This presents an opportunity for intervention where people can be diagnosed earlier and live longer with a better quality of life.

Please help us try and save other families from going through this nightmare.

Jenny has a Facebook fundraising page if you would like to sponsor her.

<https://pcam.pancreaticcancer.org.uk/fundraisers/jennyperry>

**Thank you so much
Chris Cluley**

Catney Common November 2020

Since the first lockdown we have managed two working parties, keeping well apart while doing jobs in different parts of the common. The woodland bed has been rebuilt, new bulbs planted and a lot of clearing of scrub and nettles along the path, thanks to the new strimmer.

The open common has been mown and the grass removed by the team from Newland Bishop Farm who have done a good job. We hope this will show benefits in future years. There are plans to try and establish two areas of meadow flowers and these will be seeded in early spring.

Bird boxes.

A record year! Four out of six boxes showed signs of having nests. They have all been cleaned, repaired and replaced. The bird feeder is now filled, help with keeping this topped up gratefully received. Squirrels continue to spill lots of it, despite the 'squirrel proof' design.

Thanks to everyone who has helped on the common in any way through a difficult year. We will hope for better things in 2021.

Heather Bird



On 3 November 1718 John Montague, Fourth Earl of Sandwich, was born in London

What is John Montague famous for?

John Montague is credited with creating the first sandwich in 1778. Supposedly, the Earl, while gambling, refused to leave the table during an all-night card game. Hungry, he told his servants to bring him some meat placed between two slices of bread so he could eat with one hand and continue to play with the other.

.....



Please take particular care this year if you are having fireworks in your back garden. Also if you are having those fireworks on a different day, please warn any neighbours that have pets, so they can keep them in.

STAY SAFE EVERYONE.

Message from Dan at The Boat, Catherine De Barnes

We're looking forward to welcoming you to The Boat for the big reveal soon, in the meantime, we'd like to take this opportunity to tell you a little more about your new pub and what you can expect from us when we open our doors.

We will be open for all occasions so you can pop in for a coffee and a pastry in the morning, enjoy a hearty Sunday Roast after a brisk (with muddy boots on and paws in tow) or get together for a bottle of our finest wine or beer around the fire.

Our team are incredible and they'll be on hand to make sure everyone is well taken care of, both when it comes to keeping safe, but also cooking up some lovely, comforting pub dishes to warm you up as winter sets in.

All that's left to do is sort the finishing touches and we'll be ready to welcome you in with open arms. We hope that our unique pub will become a place you'll feel comfortable in, we can't wait to see you all soon.

We're always on the look out for good people, send your CV to info@theboat-catherinedebarnes.co.uk



November is the month to remind us to be thankful for the many positive things happening in our life.

Ingredients

- **plain flour** 250g
- **bicarbonate of soda** 1 ½ tsp
- **ground ginger** 2 tsp
- **mixed spice** 1 tsp
- **golden caster sugar** 200g
- **soft light brown sugar** 75g
- **eggs** 2
- **vegetable oil** 150ml
- **Bramley apple sauce** 350g
- **toffee sauce** to serve

APPLE TOPPING

- **butter** 25g, plus extra for the tin
- **soft light brown sugar** 2 tbsp
- **eating apples** 2, peeled and cut into wedges

SPICED TOFFEE APPLE AND GINGER CAKE

Method

• STEP 1

To make the apple topping, heat the butter in a pan and stir in the brown sugar until melted, then add the apples and toss. Leave to cool a little.

• STEP 2

Heat the oven to 180C/fan 160C/gas 4. Butter and line the base of a deep 22-23cm square cake tin. Mix the flour, bicarb, ginger and mixed spice in a bowl. Put the sugars, eggs, oil and apple sauce in a separate bowl, and whisk to combine. Gradually add the dry ingredients, beating until combined.

• STEP 3

Spoon the mixture into the tin. Arrange the apple pieces and drizzle the sauce from the pan on top and bake for 40-45 minutes. Keep an eye on it and cover the cake with foil for the final 5-10 minutes if it's browning too much.

• STEP 4

Cool the cake in the tin for 10 minutes then turn out. Serve warm as a pudding or at room temperature. Drizzle with toffee sauce to serve.



The apple sauce makes this cake deliciously squidgy. Serve warm as a pudding with cream or ice cream, or just at room temperature with a hot drink

On 10 November 1983 Microsoft Corporation formally announced Microsoft Windows, a next-generation operating system that would provide a graphical user interface (GUI) and a multitasking environment for IBM computers. It was known as Windows 1.0.

Apple released the first Macintosh in January 1984.

Windows 2.0 didn't show up until 1987.

On 20th November 1947 Her Royal Highness Princess Elizabeth (now Queen Elizabeth II) married Lieutenant Philip Mountbatten (Prince Philip, Duke of Edinburgh) at Westminster Abbey.

On 23 November 1852 the first four British pillar boxes were introduced as an experiment in St Helier, on the island of Jersey. They were red-painted hexagonal boxes much the same as seen in the first photograph below.



VICTORIAN POSTBOX IN LUGTROUT LANE

