

CATNEY NEWS

2021

MARCH



CONTACTS

Frances Cook, Secretary to the Residents Association:

secretary@catney.co.uk 0776 8502039

Catney News: Please send all articles to Christine Cluley, Editor, on **cluleychris8@outlook.com** or ring 01675 442728 All articles need to be with Chris by the 20th of the month.

Village Hall bookings: Gareth Thomas on 07796268012 or

gareth10637@hotmail.co.uk

Twitter account: @CatneyResAssoc

Website of Residents Association: www.catney.co.uk



NEWS FROM YOUR RESIDENTS ASSOCIATION

Planning Applications – Latest information

PL/2021/00275/MINFHO Proposal: Construct extensions including remodelling to principal elevation and replacement hipped roof (Revised application relating to permission ref: PL/2020/01266/MINFHO). Location: 1 Oakfields Way Catherine De Barnes Solihull B91 2TR

PL/2021/00335/MINFHO Proposal: Ground floor rear extension to form a conservatory

Location: 380 Lugtrout Lane B91 2TN

PL/2015/51409/PPOL: Construction of a Motorway Service Area, slip roads, hotel etc

Location: off roundabout at the new Jct5a M42 alongside Solihull Road.

At the time of writing the Association were advised that this application was due to be put before the Planning Committee on 24th February with the Officers “minded to approve” it. Representatives of the Association, Parish Council and Ward Cllr Bob Sleigh are addressing the Committee seeking refusal. By the time you read this the decision will be known and most of you will be aware of the outcome. Fingers crossed.

It may not be the last battle- if the applicant at Junction 4 appeals the decision, it could go to the Secretary of State and Public Enquiry for the final decision.

Current Appeals still waiting a decision from the Planning Inspectorate

APP/Q4625/W/20/3262161 (PL/2020/01821/PPOL) Land to the east of 351 Lugtrout Lane B91 2TW

APP/Q4625/W/20/3256579 (PL/2019/03108/PPFL) Change of use to Transport Yard at Woodhouse Farm.

Catherine de Barnes Village Defibrillator

As many of you will have seen the village has a defibrillator funded by Community Infrastructure Levy monies from the Parish Council. It is sited on the wall outside the Nisa. We are in the process of organising at least 1 training session for residents who are interested in knowing what to do in the case of an emergency. If you are interested in participating in a training session please email the secretary@catney.co.uk or leave a message on 07768 502039 with your name, phone number – could you tell us whether you could attend a day or evening session.

Census Day Sunday March 21st

The aim is to run the Census predominantly online. It is appreciated that many folks, for one reason or another, will not be able to complete the form online although it will be less complicated than filling in the document by hand. Individuals will be given a passcode, and this will be used to access the system. It is quite acceptable for a person unable to complete the document online themselves for them to ask a trusted friend, or a relative, using their passcode to access the system and complete the online document using the answers provided by the person whose form is being completed.

Hard copies of the form will be available to those that require it, but you will need to make a request when the census contact opens on 1st March – if you have problems, please let us know and we will try and help.

(from Census UK)

Residents Association - Annual General Meeting

The Covid-19 situation will probably not allow us to hold a physical meeting this year. The proposal is to hold a virtual TEAMS meeting on March 17th commencing at 7.30pm.

The Reports package is on the website www.catney.co.uk now – if you are unable to access them please contact the Secretary and we will arrange to get hard copies to you. **Members** who wish to view the meeting need to send their email addresses to clerk@hamptoninarden.org.uk by midday 14th March together with any questions you may have. If you have registered your interest to view/and or sent a question you will be sent an email invitation which you need to click on before the meeting is due to start to be able to view. **No** questions can be accepted after midday on the 14th March.

If you wish to address the Meeting, we have allowed 3 minutes each, at the start of the meeting-the Chair will call you in order of speaking. The questions that have been raised will be addressed at the time the topic is being discussed. Please make this clear when you contact the Clerk that you wish to speak.

The format of the meeting will be a Q&A session/topic with approval sought for the various reports.

Important Only Members of the Association are eligible to take part in the meeting, and or submit questions.

If you wish to put your name forward to join the Committee please contact email secretary@catney.co.uk or leave a message on 07768 502039 by 14th March with your name and contact details .

Neighbourhood Plan Review

As a result of Peter Green's endeavours, the results of the surveys have been entered on various spreadsheets and the next task for the Working Group is to analyse the responses and start developing Plans and Policies that will make up the new Neighbourhood Plan. If you are interested in joining the Working Group, please contact the Parish Clerk at clerk@hamptoninarden.org.uk or telephone 01675 442017 to register your interest. The existing Plan can be viewed at www.hamptoninarden.org.uk .

Dates for the Diary

Next Parish Council Meeting Wednesday 10th March commencing 7.30pm
(via TEAMS)

Parish Villages Annual General Meeting Tuesday 13th April 2021

Parish Council AGM Wednesday 12th May 2021

NB: Parish Council Meetings take place in the Meeting room adjacent to The Beeches or in the event that COVID-19 restrictions are still in place they will be held vis TEAMS. The public are welcome to and encouraged to attend. Where meetings are be held online please contact Julie Barnes (Clerk) at clerk@hamptoninarden.org.uk or phone 01675 442017 for advice as how to participate.

Village Traffic Calming

Much to our surprise, but very welcome all the same, was the news that the village, at last, is going to get the benefit of a pedestrian crossing sometime this financial year 2021/22. The funds have been allocated to the scheme, currently no design details have yet been prepared. As soon as drawings are available, we will let you know.

We have had no responses to the Village Traffic Calming article outlining plans for the village so will assume the village is content with what has been proposed. The project will be moving to the next stage – discussions with the PC and SMBC Highways.



Membership Appeal 2021

Heartfelt thanks to everyone who has sent in their form and for your generous contributions. As I write we have 135 members and it is truly rewarding to open the envelopes and know that residents appreciate what the committee and other volunteers work hard to accomplish. We are still quite a bit short of our goal of 200 households. If you've lost your membership appeal just ask me for a new form or simply put your details (name, address and e mail) on a slip of paper and hand it in at the NISA with your subs. We can even do the whole process online if you contact me at the email address below.

The subscription fees are £3 for individuals, £5 for couples and £10 for a family of 4 or more adults. It is very much appreciated if households can contribute £10 to help cover our costs.

Everyone who has joined should have received a membership card as a receipt so please get in touch if you haven't had one. Thank you for your support!

Frances Cook (secretary@catney.co.uk) (07768 502039)

Remember the canal in late spring/early summer?





WALKS FROM CATNEY – THE FIRST IN AN OCCASIONAL SERIES

Walk 1: Double figure-of-eight to and from Henwood Hall Farm, 4.1miles

By Neil Smith

We are very lucky to have so many footpaths around the village. Judging by the number of people I see when running around the area, many of us know them already. In case you don't, here is the first in a series of local walks.

Please make sure you socially distance and be careful on roads. When on farmland please stick to the centre of the paths, however muddy. Increased usage means farmers are finding paths getting trodden wider, potentially damaging crops.

Walk 1 is 4.1 miles, mostly flat, very muddy in places (especially during Winter).

1. Starting outside Longfellows, head towards Solihull along Hampton lane for 100 yards, cross the road and turn left into Henwood Lane.
2. Follow Henwood Lane for 0.5 miles until you come to the canal bridge. Cross the bridge and turn right onto the towpath.
3. Follow the towpath (heading south with the canal on your right) for 0.4 miles to the next canal bridge, at Copt Heath Wharf. Come off the towpath and turn left onto Barston Lane.
4. Follow Barston Lane, heading east, for 200 yards and turn right at the T-junction.
5. Go under the motorway, turn left and immediately cross the road (beware fast moving traffic) to make your way up the farm drive opposite, going through the waymarked kissing gate.
6. After 200 yards, don't follow the drive left towards the farm buildings. Instead follow the track straight on which turns into a footpath across the fields, bearing right as it does.
7. Follow the footpath for 0.25 miles, crossing a stile and through two kissing gates (all waymarked).
8. The path narrows through some undergrowth up to a canal bridge. Don't cross the bridge, instead join the towpath by crossing the stile on your left and doubling back to turn right onto the canal and under the bridge.
9. You are now heading north on the towpath with the canal on your left. Follow this for 0.4 miles, under Jacobean Lane and the motorway.
10. Go under the canal bridge (the towpath exit on the south side of the bridge is dangerously steep and slippery) and double back to exit the towpath on the same canal exit you used earlier.
11. This time turn right onto Barston Lane, cross the canal bridge and follow the road west until it becomes a footpath.
12. Follow the path, parallel to the motorway, for 300 yards, bending right away from the motorway, then it becomes Ravenshaw Lane.

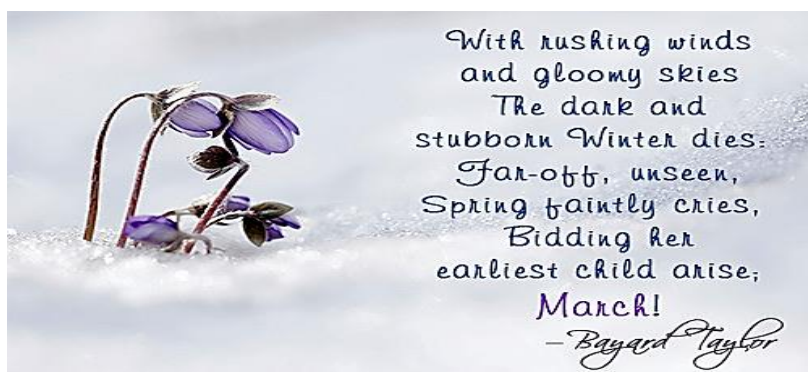
13. Follow Ravenshaw Lane past Whale Tankers for 200 yards before turning right onto the closed off road.
14. Follow the road for 0.3 miles. Part way along it becomes a footpath and crosses by footbridge over the river.
15. Just before the first house turn right onto the waymarked footpath, through the kissing gate.
16. This takes you onto fields. Head east for 0.5 miles, keeping the field boundaries to your left. You will walk past or through three kissing gates. After passing the Canal and River Trust compound you come out on Henwood Lane.
17. Turn right, cross the canal bridge and use the same entrance on your right you used earlier to access the towpath. This time double back under the bridge and follow the towpath heading east then north (with canal on your left) for 0.6 miles before leaving the towpath at Catney and back onto Hampton Lane.

The walk can be shortened by leaving out one or both loops of the double figure-of-eight. And of course, you can do the individual loops in a variety of combinations of direction.





1886 map of Catney

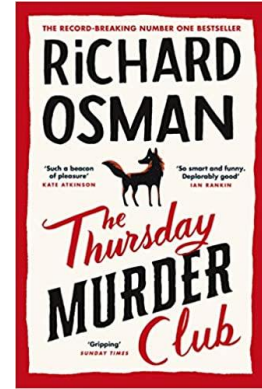


BOOK REVIEW

THE THURSDAY MURDER CLUB

A novel by Richard Osman

A Book Review by John Alderson



Richard Osman is well known to many I imagine for his television work in *Pointless* and *House of Games*, but it is as an author of his first novel that we are introduced to him in the “*The Thursday Murder Club*”.

This book has received high praise from the critics and is currently in the best seller list, which is not a surprise to me as this is a delightful and funny book, full of very interesting characters.

Elizabeth, Ibrahim and Ron, soon joined by Joyce are members of the so-called Thursday Murder Club, who all live in an upmarket resident’s home in the south of England. The group, led by the redoubtable Elizabeth (her of a strange and secretive background), meet regularly on Thursdays, when the decreed room is available, to examine unsolved murders.

Joyce, through her diary entries and as bag woman to Elizabeth, is the link between the action and the reader, whilst Ibrahim provides the intelligence and Ron, with his unlawful past, provides experience. With the advent of a real murder, the group cleverly manages to join directly with the police investigation. A second murder, slightly closer to home, and the discovery of “additional bones “in a grave in the adjacent graveyard, really puts the group to work to provide a most entertaining story and delightful read.

I recommend this as a different and lightheaded novel for reading during our current difficult times.

MOTHERING SUNDAY

14TH MARCH



Mother's Day, or Mothering Sunday in the UK and Ireland, is a day to show love, gratitude and appreciation to all wonderful mums everywhere, through acts of kindness and the giving of gifts and flowers. Mothering Sunday was originally a day to visit the “mother church” and girls working as servants in big houses were given a day off to visit their own mothers.

Mother's Day celebrations date back as far as the ancient Greeks where they would celebrate Rhea, the Mother of the Gods and Goddesses, every spring with festivals of worship. The Romans also celebrated a mother Goddess, Cybele, every March as far back as 250BC.

Mothering Sunday has been celebrated on the fourth Sunday in Lent, in the UK and Ireland, since the 16th century.

A Happy Ending

We occasionally have stray cats visiting our garden and we sometimes feed them if they sit long enough by our kitchen door. Early in February we began to see a new and very hungry visitor. After several days it gradually dawned on us that this cat did not have a home to go to at night and was actually living in our garden.....and it was so perishingly cold. So, we built him a little shelter by the back door and put his picture on the Catney Facebook page. By 5 pm that day, and through a series of links, the owner was at our door. Misty had been missing for several weeks after his owner moved house. The family were very happy to be re-united with their pet and although Facebook is often criticised in this case it saved the day!

Frances Cook



Covid 19 restrictions have meant that the Parish Church at Hampton in Arden has not held services for a while.

Rev. Stuart is very much hoping that by Easter, services will recommence.

Do please check the church website closer to April, when we hope to have more information about Easter week services.

In the meantime, the website is updated every week with links to live-streamed (clergy only) Sunday services at Hampton church at 8.15 am, 11 am and 7.30 pm and a recorded service, plus lots of other information including the weekly church Bulletin. The church is open for private prayer on Thursdays and Sundays. (Sundays with the exception of service times)

www.hamptoninardenchurch.org.uk

Your garden in March

Make your beds

Make the most of the dry spells, or tarp soil to keep dry if the rain continues. Prepare vegetable beds by digging in compost or well-rotted manure. If you are planning to make a new area or to renovate a tired corner, remember the gift of well-prepared ground: new plantings will thank you for it.

Divide and rule

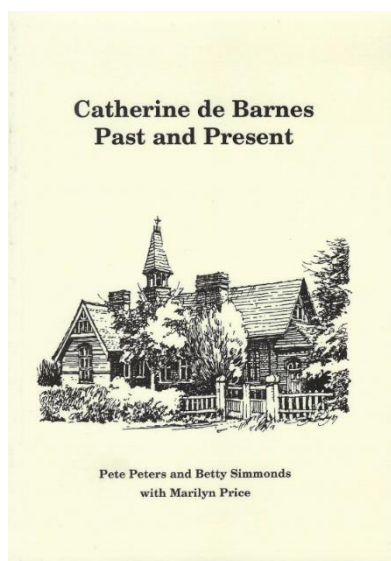
The bare-root planting season is drawing to a close and, although you can push it into early April, it is best to get plants in by the end of the month, as hair roots need to be making their way into the soil to support the top growth as soon as it's sprung. That said, it is the perfect time for planting bare-root strawberries and other soft fruit, and for dividing perennials that may need splitting. When you start to see a bald spot in the centre of the clump, lift the whole clump and tease apart with two forks placed back-to-back for leverage. Take only the strongest and healthiest divisions and consign the weakest to the compost heap. Containerised plants can go in any time, but they too will appreciate a grip on their position before top growth starts to accelerate.

Close in on weeds

If you haven't been tempted to do so already or you've been held back by the weather, wade into the beds to make the big clear-up. Work from boards to prevent compaction on heavy soil and use this as a chance to really get to know what's going on in the beds. Cut perennials close to the base to avoid jagged stems that will snare you later while weeding, and use this chance of getting in close to check for weeds.

*** On Sale Now *** Catherine de Barnes Past and Present

"Catherine de Barnes – it suggests that the name came from a mediaeval lady of the manor, possibly of French descent."



So begins the fantastic book, *Catherine de Barnes – Past and Present*, first published in 2000 following years of research led by current village resident Pete Peters. To find out whether this is indeed the origin of the village name you will need to buy the book, now on sale for £5.

The book is a comprehensive 77-page history of the village from early history dating back to Saxon times through to more recent years. It includes many old photographs and maps as well as huge amounts of fascinating information. How many people know the link between the village and the mass production of pens in the nineteenth century for instance?

The book is available for £5 with all proceeds to the Village Hall. To buy a copy please call Lesley Cuthbert on 07776 480813 to arrange collection from 9 Oakfields Way.