

# M42 junction 6 scheme

Project Newsletter  
**Summer 2021**



**Welcome to the summer 2021 edition of our M42 junction 6 improvement scheme newsletter. In it you'll find all the latest information and updates from the project team.**

## **Main construction phase gathers pace**

Traffic congestion and poor journey reliability have constrained investment and economic growth around the M42 at junction 6. Having almost reached capacity, the junction has become a bottleneck, causing delays across the network.

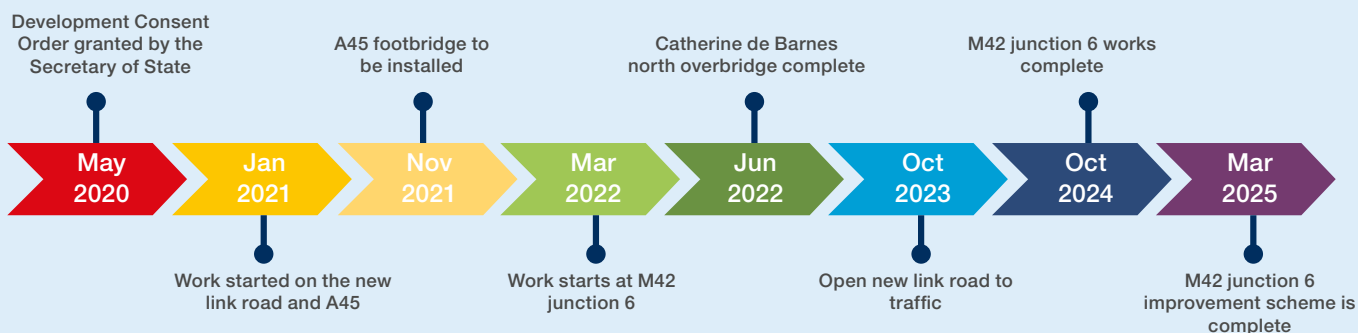
Our work on the junction improvement scheme has been progressing well since our last update in November 2020.

We've cleared vegetation to make way for the main construction areas and new structures, and survey work has been ongoing to assess groundwater and ground conditions.

We've been working with Esso, Western Power Distribution and Cadent to carry out works in and around their pipes and equipment, and we've built our main site compound near Clock Lane. The compound will serve as the main base for site staff, plant machinery and materials for the duration of construction, with some smaller satellite compounds needed as work progresses.

We've been busy building a series of haul roads which will allow us to transport material to the site and take away the spoil from our excavations. We've also started digging out the footprint of the new link road and building the private means of access that will run alongside the new road allowing access into the land west of Catherine de Barnes Lane.

## Construction timeline



Once complete, the junction upgrade will allow better movement of traffic on and off the A45, supporting access to Birmingham Airport and preparing capacity for the new HS2 station. Additionally, the upgrade will:

- ensure the safe and reliable operation of the road network
- increase capacity at junction 6, reducing congestion and improving journey reliability
- improve access to key businesses and locations including Birmingham Airport and the NEC, supporting economic growth and job creation
- improve access for cyclists, walkers and other vulnerable users of the network

### Work on the A45 footbridge is underway

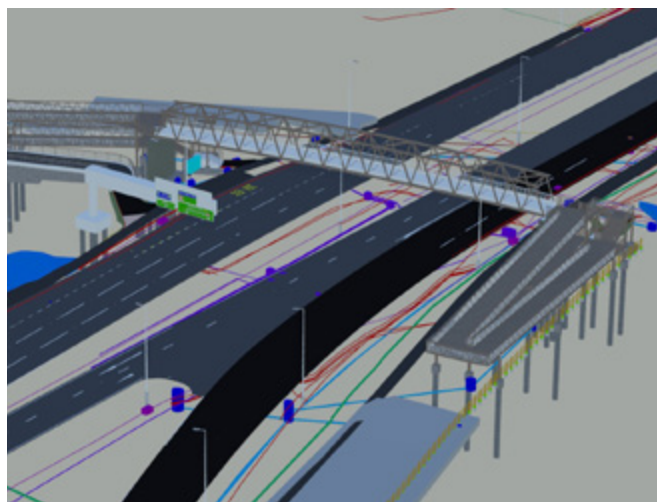
Work to build the foundations of the planned A45 pedestrian footbridge have been underway since the early part of the year and we're on course to install the bridge in early 2022.

At the end of March, the A45 was closed for 3 nights while the project team removed an existing gantry, near the Arden hotel, to create room for the new footbridge.

The bridge will cross the A45 and improve pedestrian access to businesses including the National Exhibition Centre (NEC) and Birmingham Airport.

A piling platform, which is a type of working platform used for piling rigs to travel on as it provides a stable base for them to move around the site and operate, was set up on both the north and south side of the A45, with work successfully completed in readiness for the footbridge installation.

The new footbridge will be built off site and assembled on site by an expert team to minimise disruption to the local community and travelling public. The footbridge will be installed over a weekend and, to keep our workforce and motorists safe, we'll need to close the A45 while we carry out this work.



*Footbridge underway.*

## Digital solutions bring the scheme into focus

The project team is using a digital innovation known as the Trimble Site Vision system to bring project design to life.

The system overlays the design plans on top of real-life images and presents the information in a way that allows the team to gain an increased understanding of how the scheme will look once structures, such as the new bridges and landscaping, are complete.

The technology has recently been used with landowners and the District Valuer to help them understand how the scheme affects the local area.



*Digital solutions.*

## Set out safely for your holiday or day trip

Almost ready to set off on your summer adventure? Don't let car trouble ruin the start of your break. Your vehicle may have been stuck on the drive for months. So give it the TLC it deserves before you head off. For a safe and happy journey, check your:

- tyre pressure and tread
- engine oil
- water
- lights
- fuel

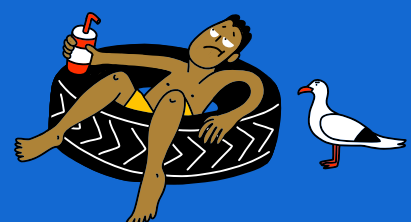
And remember to plan your journey and allow plenty of time for breaks. It's not just your car that needs refuelling!

We want you to get to your destination safely and without delays at the roadside, so check out our webpage for more helpful hints:

**<https://highwaysengland.co.uk/road-safety/tyre-checks/>**

**NOTHING SAYS  
'YAY! IT'S  
A HOLIDAY'  
QUITE LIKE  
A FLAT TYRE  
ON THE  
MOTORWAY.**

1 in 5 motorway breakdowns  
are caused by tyre problems.  
Before you set off, check  
your tyre pressure.



 **highways**  
england





## Why we closed Solihull Road

Ever since the project was granted consent by the Secretary of State for Transport in May 2021, we've been looking for ways to reduce our environmental impact and the disruption felt by customers.

As a result, the replacement Solihull Road bridge has been moved 10 metres north to reduce the impact on ancient woodland by over 1,300 square metres. The change in design has reduced the amount of time it will take to deliver the work in and around Solihull Road bridge.

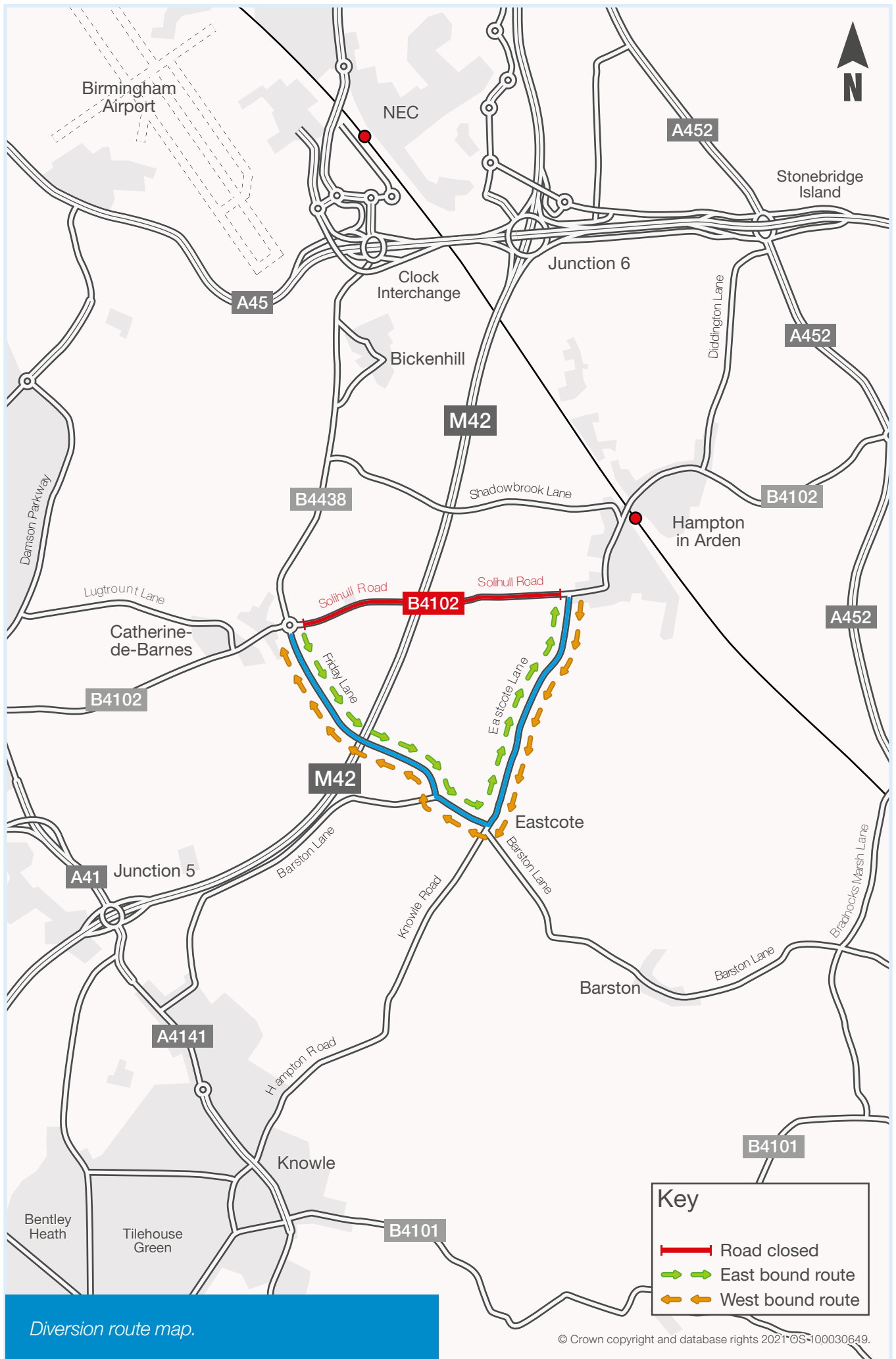
It's these combined activities and efficiencies which led to the decision to close a section of Solihull Road until December 2022.

We appreciate road closures can be frustrating and disruptive, but by closing the bridge it means 12,000 construction vehicle journeys can be contained within the site (instead of using the local road network) which will allow the earthworks section of the project to finish 5 months earlier than planned.

The team is committed to working with local businesses and stakeholders to help with any issues this road closure may cause and we'll make sure the diversion route is maintained to the same safe standard during the closure.



*Additional signage installed.*



Diversion route map.



## Meet the team at our September public information events

We're holding public information events during September and we hope you'll come along to meet us. We'll share updates on how the scheme is progressing and will have a virtual model available to show what the new link road and junction improvements will look like when they're complete.

Our team will be available to answer your questions and we'll have experts from our supply chain on hand to talk about a range of topics including our environmental work, traffic management, construction plans and more.

### The events will be held on:

- **Friday 24 September, 11am - 8pm**  
at Catherine de Barnes Village Hall,  
97 Hampton Lane,  
Catherine de Barnes, B91 2TJ.
- **Monday 27 September, 10am - 7pm**  
at Arden Hotel & Leisure Club,  
Henley Suite, Coventry Road,  
Bickenhill, B92 0EH.
- **Tuesday 28 September, 10am - 3pm**  
at The Fentham Hall, Marsh Lane,  
Hampton in Arden,  
B92 0AH.

## An update on school engagement and social value

Our team is working with the local community and continuing to deliver social value activities where we can. Over the last few months, we've been working with a social enterprise called MyKindaFuture and Job Centre Plus, with members of the project team mentoring 18–24 year-olds who have found themselves unemployed due to the impact Covid 19 has had on employment opportunities.

Other social value programmes the scheme has supported this year include an ex-offender

programme, women in construction programme and the government backed Kickstart programme to support young people back into work.

Several virtual school engagement sessions have been delivered on topics such as road safety and job opportunities within the construction industry, and we're committed to holding at least 10 school events every year during the lifetime of the scheme.

We also have a wood redistribution scheme in place which allows material from site clearance works to be made available to the local community. Over 15 tonnes of wood chippings were recently donated to Hampton in Arden Parish Council.



*Wood redistribution scheme.*



*Involvement with the local community.*

## Connected customer conversations

The project team is committed to working collaboratively with local stakeholders, businesses, and the local community. We work hard to provide regular updates to all those affected by our work activities and welcome the opportunity to provide project information through existing community channels.

The customer and stakeholder team is working closely with HS2 to share public communication platforms, as both local major infrastructure project teams are keen to provide customers with the key information that matters most. We understand that when it comes to traffic updates, road users want to understand quickly and easily how our roadworks will impact their journeys. So by teaming up with HS2 we can provide joint updates which will hopefully take some of the stress out of journey planning.

To help keep Birmingham Business Park up to date with the progress we're making on the M42 junction 6 scheme, HS2 project and wider plans for the local area, we've joined up with partners at HS2, the Urban Growth Company and Solihull Metropolitan Borough Council's Sustainable Travel Team to host one to one virtual drop-in sessions. These events started in May this year, with further events planned for the next 12 months. If you're part of a business or organisation that would benefit from an online M42 junction 6 drop-in session, please contact us at: [M42Junction6@highwaysengland.co.uk](mailto:M42Junction6@highwaysengland.co.uk) to discuss how we can help.



## Contact us



You can sign up for future updates on our web page at [www.highwaysengland.co.uk/m42j6](http://www.highwaysengland.co.uk/m42j6)

Or, why not follow us on:



**Twitter: @HighwaysWMIDS**



**Facebook: Highways England West Midlands**



If you have any further questions, please contact a member of our team by emailing us at:  
**[M42Junction6@highwaysengland.co.uk](mailto:M42Junction6@highwaysengland.co.uk)**



If you need help accessing this or any other Highways England information, please call **0300 123 5000** and we will help you.



© Crown copyright 2021.

You may re-use this information (not including logos) free of charge in any format or medium, under the terms of the Open Government Licence. To view this licence: visit [www.nationalarchives.gov.uk/doc/open-government-licence/](http://www.nationalarchives.gov.uk/doc/open-government-licence/) write to the **Information Policy Team, The National Archives, Kew, London TW9 4DU**, or email [psi@nationalarchives.gsi.gov.uk](mailto:psi@nationalarchives.gsi.gov.uk).

Mapping (where present): © Crown copyright and database rights 2021 OS 100030649. You are permitted to use this data solely to enable you to respond to, or interact with, the organisation that provided you with the data. You are not permitted to copy, sub-licence, distribute or sell any of this data to third parties in any form.

This document is also available on our website at [www.highwaysengland.co.uk](http://www.highwaysengland.co.uk)  
For an accessible version of this publication please call **0300 123 5000** and we will help you.

If you have any enquiries about this publication email [info@highwaysengland.co.uk](mailto:info@highwaysengland.co.uk) or call **0300 123 5000\***. Please quote the Highways England publications code **PR108/21**.

Highways England creative job number BHM21\_0085

\*Calls to 03 numbers cost no more than a national rate call to an 01 or 02 number and must count towards any inclusive minutes in the same way as 01 and 02 calls. These rules apply to calls from any type of line including mobile, BT, other fixed line or payphone. Calls may be recorded or monitored.

Registered office Bridge House, 1 Walnut Tree Close, Guildford GU1 4LZ  
Highways England Company Limited registered in England and Wales number 09346363