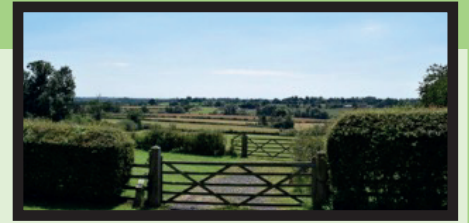


## Parish News - May 2022

### HELLO AGAIN

**W**elcome to the May edition of your Parish Council Newsletter! Following a busy few months there is a lot to report on... we have some exciting events to look forward to including the Hampton Village Festival, events at the Library in Hampton, Mobile Warm Hubs in Catherine-de-Barnes and a mention of the Queens Platinum Jubilee Celebrations. We also have important news about fibre broadband, traffic calming and pedestrian safety in Hampton and the (now approved) Motorway Service Area near Catherine-de-Barnes. We also have some key updates from local organisations including the George Fentham Trust and the Hampton-in-Arden Scouts. Read on...!



### HAMPTON VILLAGE FESTIVAL 2022 – SATURDAY 2ND JULY!

**The Hampton Festival Committee are pleased to confirm that after a two-year enforced break the annual Hampton Village Festival will be back this year on Saturday 2nd July at the Recreation Ground.**

*You're not mistaken if you thought that it was to be held on a different date... The festival was previously advertised to take place on a weekend earlier in the year. **However**, due to a number of logistic reasons the date for the festival has now been set for the **2nd July**. The committee is hoping that this will be the biggest and best yet so **SAVE THE DATE!***

With many new residents in the Village since our last festival this is an ideal opportunity for them to not only find out what the Village has to offer but also socialise and party with other villagers - whilst at the same time help support and raise funds for many of the village clubs and societies.

Please look out for more details that will be released on the Hampton Facebook page as well as other social media outlets. In the meantime, if any resident would like to get involved in the organisation of this year's event, then please contact the Parish Clerk who will pass on your details to the Festival Committee.

### THE QUEEN'S PLATINUM JUBILEE WEEKEND – SUNDAY 5TH JUNE 2022

**At the time of writing the Parish Council is unaware of any community based events centred around the Platinum Jubilee Celebration.**

As and when information does become available it will be posted on the Parish Council website ([www.hamptininarden.org.uk](http://www.hamptininarden.org.uk)) and on social media.



### CONSERVATION GROUP – A CALL FOR NEW MEMBERS

**The Conservation Group comprises a number of volunteers who meet regularly to help maintain the Spinney and Recreation Ground. The group, ably led by David Grimshaw for many years, is affiliated to the Hampton-in-Arden Society with occasional financial support for equipment from the Parish Council. Many will be saddened to hear that Dave very recently passed away and the Group urgently needs a new leader to ensure that his legacy carries on.**

Inevitably, time has taken its toll and the number of volunteers has decreased substantially over the past couple of years. There is now an urgent need for more, and preferably some younger volunteers to join the Group and anyone interested is asked to contact Parish Clerk Julie Barnes for more information.

### NEIGHBOURHOOD PLAN REVIEW -UPDATE

**A basic draft Neighbourhood Plan has been submitted to Solihull MBC for informal comment and we expect to get a response by the time this Newsletter is published. At the same time, we are looking to get that same document reviewed by an independent planning consultant.**

Depending on the responses from these two organisations we expect to get the draft into a state of readiness with Solihull

MBC that will allow us to proceed with a Consultation by the summer, leading to a referendum (hopefully in the autumn).

The final version then goes to an independent examiner who will decide if it meets various soundness and compliance tests. At that point the Plan will be adopted by Solihull MBC and form a part of their planning policies.

We will continue to provide updates through the Newsletter.

*Hampton-in-Arden Parish Council*

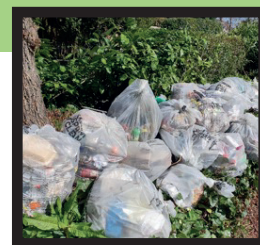
## THE GREAT BRITISH SPRING CLEAN – A SUCCESS!

**In March 2022, the Parish Council joined forces with Solihull MBC and the Hampton Wombles to take part in the Great British Spring Clean, a 'Keep Britain Tidy' initiative.**

● In Hampton-in-Arden we had over 30 volunteers of all ages (with our youngest volunteers being only 5 years old) and we collected over 25 bags of rubbish!

● In Catherine-de-Barnes there were 24 volunteers split in to 12 teams who litter picked most roads and lanes in the village. It's fair to say that most people were amazed of the amount of full bags, cardboard and minor fly tipped items that resulted from just 90 minutes picking!

*Thank you to everyone that took part and to Solihull MBC for providing the litter picking equipment (and the removal of the litter collected!). We look forward to taking part in the event again next year.*



## PARISH COUNCIL ANNUAL MEETING – DID YOU MISS IT?!

**If you were unable to attend our Annual Meeting in April, don't worry! You can access our Annual Report (which sets out everything your Parish Council has been up to for the past 12 months) on our website.**

Please visit for our Annual Report from 2021/22 (and for previous years as well!):

<http://hamptoninarden.org.uk/your-parish-council/finance/>

## PLANNING ISSUES

**M42 Motorway Service Area (MSA) at the New Junction 5a - Catherine-de-Barnes (Solihull Road Appeal Reference: APP/Q4625/W/21/3275290 Extra MSA)**

As most of you will know, the Planning Inspector upheld the appeal by Extra, which reversed the Planning Committee's unanimous decision to refuse the planning application. **So**, the development is **almost certain to go ahead**.

However as the current development proposals require that stretch of the M42 having All Lane Running (ALR) it is **unlikely** that any work will commence **until 2025**. The Government has put a hold on any new ALR schemes until 5 years' safety data is available as to how safe ALR schemes are. This data will not be available until sometime in 2024, and then it needs to be analysed and decisions made as to whether ALR schemes are safe and new ones can go ahead or whether alternative schemes need to be developed.

The original application was only an "outline application" and the Inspector made a number of conditions which need to be

fulfilled by and detailed application can be approved.

The PC is working with our Ward Councillors and our local MP to see what avenues are left open. We will keep you up to date with our progress via the Newsletter, our website and our Facebook page – watch this space!

**M6 Junction 6 Improvement Scheme - new link road from Solihull Road to the Clock Interchange**

Residents will see that extensive work is being undertaken either side of Catherine-de-Barnes Lane – a new roundabout is being built on the east side of Catherine-de-Barnes Lane and new pitches for the Warwickshire Gaelic Athletic Association on the west side.

The PC meets with Skanska's representatives (the main contractor for this work) on a monthly basis and are being made aware of any associated road closures (details of which are placed on our website and our Facebook page).

A new Solihull Road bridge is due to be installed in September.

## STATION PLANTERS – PLANT THIEVES AT LARGE

**Residents will recall that plants have been stolen from the Station Planters twice over recent months. The Parish Council purchase these plants then they are kindly planted up and maintained by the Hampton in Arden Gardening Club.**

Recently, the Parish Council were kindly gifted a third lot of plants and once again the Hampton in Arden Gardening Club planted them for us. **Very sadly, they have now been stolen again.**

We are extremely disappointed.

## FIBRE BROADBAND – GOOD NEWS!

**Following discussions with BT reliant Internet Service Providers (PlusNet, Vodafone, etc.) it has been confirmed that fibre to premises will be fully available in the village by May 2022.**

The fibre will make use of the existing telegraph poles.

## 1ST HAMPTON-IN-ARDEN SCOUTS

**H**ampton-In-Arden Scouts are looking for a treasurer. If you are interested in being part of your local Scout Group please email [vickyw79@gmail.com](mailto:vickyw79@gmail.com)



## LIBRARY NEWS AND EVENTS

● **The Library Opening Hours are as follows:** Tuesday 2pm – 5pm, Thursday 2pm – 5pm and Friday 2pm – 5pm. You can come in to browse the books, use our public PC and Wi-Fi, make reservations, print, and photocopy.

● **Jubilee Crafts:** Celebrate the Queen's Platinum Jubilee with some fun kids' crafts at the library on **Friday 27th May!** Drop in at any time between 2pm and 5pm and get hands-on.

● **Summer Reading Challenge 2022:** The Summer Reading Challenge encourages children aged 4 to 11 to read six library books during the long summer holiday. This year's theme is 'Gadgeteers' and it'll spark children's curiosity about the world around them, inspiring them to see the science and innovation behind everyday objects and showing that reading and science are for everyone. The Summer Reading Challenge 2022 is activating at Hampton in Arden Library on **Tuesday 12th July**, with fun activities and rewards for reading throughout the summer.

● **Free to All:** We don't charge overdue fines for any library members – it's still important to bring books back on time though! We have free reservations from any Solihull Library too. If you aren't already a member of the library, it's easy to join. All you need is proof of your name and address, like a driving licence or an official letter, and you can access all our books and our digital collections for free.

● **eBooks, Audiobooks, eMagazines, and eNewspapers:** We have a wide range of eBooks, eAudiobooks, eMagazines, and eNewspapers available through the Libby app, and over 1,000 more eAudiobooks in the Borrowbox app. Learn more and read through your web browser at <https://www.solihull.gov.uk/Libraries>. If you have any trouble signing in, get in touch with [247library@solihull.gov.uk](mailto:247library@solihull.gov.uk) and our experts will sort you out.

All information here is accurate at the time of writing. See [www.solihull.gov.uk/libraries](http://www.solihull.gov.uk/libraries) and [www.facebook.com/hamptoninardenlibrary](https://www.facebook.com/hamptoninardenlibrary) for the latest updates.



## GEORGE FENTHAM TRUST UPDATE

● In addition to our other work, the Fentham Trust owns and manages land around the village. In February, we planted 66 willow trees in a field behind the houses on Meriden Road and Diddington Lane. The trees are regarded as a crop and will grow for 15 years or so before being felled and used to make cricket bats!

● In the next few weeks, we will be undertaking rejuvenation work on the wildflower meadow which has dwindled in recent years. The meadow is situated between the lower end of the Arboretum and the pond and cinder track. This will involve covering the area with plastic sheeting to prevent the growth of grass over the summer. Wildflower seed will be sown in the autumn to hopefully produce a colourful display next summer and for years to come.

● The Trust was established to support the residents of Hampton-in-Arden village. The Trust may be able to provide financial and/or practical support to any village resident who finds themselves in hardship. Applications for assistance must be made in writing and sent to the Clerk either by post to George Fentham Meeting Room, Marsh Lane, Hampton-in-Arden, Solihull B92 0AH or by email [clerk@georgfenthamtrust.org.uk](mailto:clerk@georgfenthamtrust.org.uk)



## DID YOU KNOW ABOUT THE NEW MENTAL HEALTH DROP-IN SERVICE IN SOLIHULL?

**A new mental health drop-in service is now available for Solihull residents aged 18 and over. Run by Mental Health Matters on behalf of Solihull MBC, the service offers one-to-one support and group sessions, seven days a week, from community locations in north, central and south Solihull.**

The drop-in will provide a safe space for people to access support information on a range of topics including wellbeing, housing and employment, as well as socialise with others in a comfortable, non-judgemental environment.

**Cllr Tony Diccio**, Cabinet Member for Adult Social Care and Health, said: "I want to encourage people to come along and try this drop-in service. You might be coming to terms with a bereavement and need some support for a short period. Or perhaps you're finding work really stressful and thinking it would be helpful to talk things over with someone. Having drop in sessions at different locations around the borough means support will be closer to home and will help people

*feel part of their local community. You don't need to be referred by your GP or another professional and there's no commitment to come along every week. This service is about helping people with their personal recovery and getting back on their feet."*

**Jane Hughes**, CEO of Mental Health Matters, added: "We are excited to launch this new service and connect with people from across the borough. We believe that by offering a wide range of support and guidance, the drop-in service will provide something for everyone. We are also keen to work with attendees and the local community to shape and develop the support that's on offer."

**Sessions will be delivered from three community locations: Solihull Methodist Church, LAYCA Community Centre in Shirley and Chelmsley Wood Town Council.**

**The full drop-in timetable is available directly from the service or online at [www.mhm.org.uk/solihull-drop-in-timetable](http://www.mhm.org.uk/solihull-drop-in-timetable)**



## TRAFFIC CALMING AND PEDESTRIAN SAFETY – PHASE 2

**It was always envisaged that further traffic calming measures would be required after the Phase 1 works that have been completed in Hampton-in-Arden. The Parish Council has prepared a discussion paper that assesses the effects on traffic behaviour and pedestrian safety post-construction and recommends where additional measures are deemed necessary to further improve the village environment. This paper has now been approved by the Parish Council and formally submitted to Solihull MBC Highways for discussion, approval, and subsequent implementation.**

The recommendations for the Phase 2 Traffic Calming and Pedestrian Safety Plan for Hampton in Arden consists of the following key elements:

- One informal tabled crossing on Solihull Road (by number 21 Solihull Road)
- One informal tabled crossing on High Street (close to 82 High Street and north of the Hampton Manor junction)

- Two informal tabled crossings on Meriden Road (close to number 29 and between numbers 43 and 45 Meriden Road)
- Re-aligned kerbing and new 2 m wide pedestrian pavement on Meriden Road at the Diddington Lane junction between the service road and the lane
- Additional signage

The total estimated cost for these works is £75k. The recommended funding option to apply to Solihull MBC Highways under the HS2 Road Safety Fund has now been approved. This application will require match funding and the recommendation is for £50k from the HS2 fund and £25k from Parish Council funds using CIL monies. It is anticipated that the work will be carried out during this coming financial year.

***Further traffic calming and pedestrian safety measures are currently being considered for Catherine-de-Barnes.***

## DATES FOR YOUR DIARY

- **5th May:** Catherine-de-Barnes Residents Association (RA) Committee Meeting
- **11th May:** Parish Council Annual General Meeting
- **21st May:** Hampton Wombles Litter Pick (meet at 11am in White Lion car park)
- **6th June:** Catherine-de-Barnes Residents Association (RA) Committee Meeting
- **18th June:** Hampton Wombles Litter Pick (meet at 11am in White Lion car park)
- **4th July:** Catherine-de-Barnes Residents Association (RA) Committee Meeting
- **13th July:** Parish Council Meeting
- **30th July:** Hampton Wombles Litter Pick (meet at 11am in White Lion car park)
- **Parish Council Meetings:** *Take place at 7.30pm. The public are welcome and encouraged to attend. If you would like to join the meeting please contact Julie Barnes (Clerk) at [clerk@hamptoninarden.org.uk](mailto:clerk@hamptoninarden.org.uk) or phone 01675 442 017 for advice as to how to participate.*
- **Residents Association Committee Meetings:** *Take place at 7.30pm. Members of the Residents Association are encouraged to attend. Members can request to speak at the start of the meeting and/or if they want to raise a query/question please contact the [secretary@catney.co.uk](mailto:secretary@catney.co.uk) three working days prior to the meeting.*

## THE MOBILE WARM HUB

**This free service, run by volunteers of Warwickshire Rural Community Council and supported by Cadent Gas, comes to Catherine-de-Barnes Village Hall every Tuesday from 10.30am until 12.30pm providing free tea, coffee and biscuits to residents of Catherine-de-Barnes or Hampton-in-Arden who come along.**

At the time that this issue was being prepared the first event had been held on the 5th April and was well attended and enjoyed by all.

**The plan is for the Hub to visit the Village Hall weekly at the times shown above until the end of June.**

Look forward to seeing some of you there!



## HAVE YOU SPOTTED OUR NEW LIGHTS?!

**The Parish Council has recently had a number of lighting bollards installed to improve sight when walking along the public footpath in the dark nearby the Recreational Ground.**

We are sure you'll agree they look fantastic!



## THANK YOU FOR READING AND WE WILL SPEAK TO YOU AGAIN IN AUGUST

**Don't forget to check out our website([www.hamptoninarden.org.uk](http://www.hamptoninarden.org.uk)) and Facebook page ([www.facebook.com/pg/HamptonInArdenParishCouncil](https://www.facebook.com/pg/HamptonInArdenParishCouncil)) for up to date information between Newsletters.**